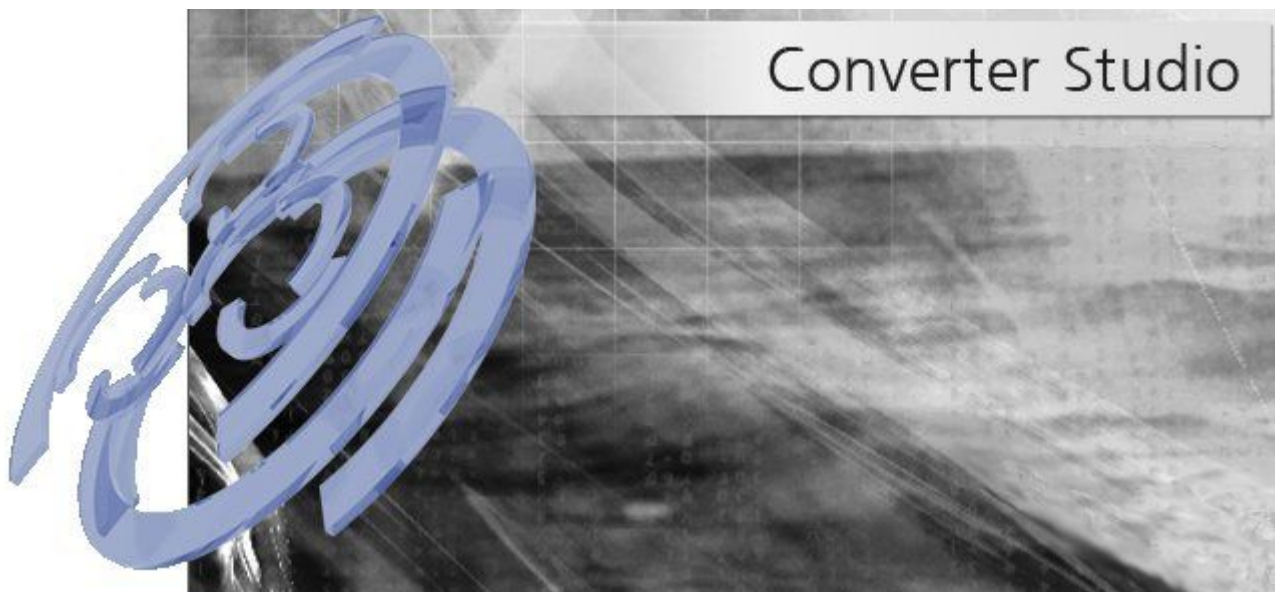




Elecard Converter Studio

User Guide

Version 3.5



Notices

Elecard Converter Studio User Guide

First edition: December 2006

Date modified: April 3, 2012.

For information, contact Elecard.

Phone: +7-3822-492-609; Fax: +7-3822-492-642

More information can be found at <http://www.elecard.com>.

For Technical Support, please contact the Elecard Technical Support Team: tsup@elecard.com

Elecard provides this publication “as is” without warranty of any kind, either expressed or implied.

This publication may contain technical inaccuracies or typographical errors. While every precaution has been taken in the preparation of this document, the publisher and author assumes no responsibility for errors or omissions. Nor is any liability assumed for damages resulting from the use of the information contained herein. Changes are periodically made to the information herein; these changes will be incorporated in new editions of the publication. Elecard may make improvements and/ or change in the product(s) and/or the program(s) described in this publication at any time.

Other company, product, trademarks, and service names are trademarks or service marks of other companies or corporations.

Copyright © 2006-2012 Elecard. All rights reserved.

CONTENTS

1. INTRODUCTION.....	4
1.1 PREFACE.....	4
1.2 USING THIS GUIDE.....	4
1.3 SYSTEM REQUIREMENTS.....	4
1.4 LICENSING AND TECHNICAL SUPPORT.....	4
2. DESCRIBING ELECARD CONVERTER STUDIO.....	6
2.1 CONVERTER STUDIO FEATURES.....	6
2.2 SPECIFICATIONS.....	9
3. ELECARD CONVERTER STUDIO INTERFACE.....	11
3.1 MAIN MENU.....	12
3.2 BATCH LIST PANEL.....	13
3.3 PROFILES PANEL.....	16
3.4 TASK PARAMETERS PANEL.....	18
3.5 PREVIEW PANEL.....	19
3.6 MESSAGES PANEL.....	20
3.7 CLUSTER PANEL.....	21
3.8 WATCH FOLDER MODE.....	24
3.9 STATISTICS PANEL.....	26
4. ADDING FILES FOR CONVERSION.....	27
5. SAVING, APPLYING AND CHANGING TASK PARAMETERS.....	31
5.1 PROFILE APPLYING.....	31
5.2 FAST PROFILE CHANGING.....	32
5.3 TASK PARAMETERS CHANGING.....	33
5.4 INPUT FILE INFORMATION.....	33
5.5 STREAM TYPE PARAMETERS.....	35
5.6 VIDEO ENCODING PARAMETERS.....	38
5.7 PICTURE TRANSFORMATION.....	40
5.8 LOGO AND ADVERTISEMENT INSERTION.....	47
5.9 AUDIO PARAMETERS.....	49
5.10 CHAPTER POINTS.....	50
6. ADVANCED ENCODING SETTINGS.....	52
6.1 AVC/H.264 VIDEO ENCODER ADVANCED SETTINGS.....	53
6.2 AVC/H.264 HARDWARE VIDEO ENCODER ADVANCED SETTINGS.....	58
6.3 MPEG-1/2 VIDEO ENCODER ADVANCED SETTINGS.....	60
6.4 MPEG-4 VIDEO ENCODER ADVANCED SETTINGS.....	63
6.5 MPEG MULTIPLEXER ADVANCED SETTINGS.....	65
7. TOOLS.....	68
7.1 FEATURE VIEWER.....	68
7.2 ADVERTISEMENT SCHEDULE EDITOR.....	69
7.3 CONVERTER STUDIO SERVICE MANAGER.....	70
7.4 BATCH LIST FILTER.....	72
7.5 CONVERTER STUDIO CONSOLE.....	74
8. CONVERTER STUDIO PREFERENCES.....	76
9. CLUSTER NODE INSTALLATION AND ADJUSTMENT.....	78
10. HOT KEYS.....	79

1. Introduction

1.1 Preface

Elecard Converter Studio is intended for professional conversion of media files at high-speed with high quality. The program converts video data into MPEG-1, MPEG-2, MPEG-4 ASP, AVC/H.264 (MPEG-4 Part 10), DV25, AVI Uncompressed and AVI HuffYUV formats. Audio data is converted into MPEG-1/2 Audio Layer I/II, AAC and WAV formats.

1.2 Using This Guide

The guide is intended for users and developers. It describes all program functions, encoding parameters and provides the instructions for its usage.

1.3 System Requirements

The Elecard Converter Studio program requires the following minimum system configuration:

- SSE-enhanced CPU (Intel® Pentium, Core2Duo, Xeon, AMD® Athlon, Opteron etc.)
- 512 MB RAM
- Any VGA card (NVIDIA video adapter with the CUDA technology support is strongly recommended)
- Windows® 2000/XP/2003 Server/Vista
- USB HASP HL key (for Pro/Pro HD versions only)

1.4 Licensing and Technical Support

Elecard Converter Studio is available as a shareware or as a registered product.

By installing, copying, or otherwise using the SOFTWARE PRODUCT or any UPDATES, you agree to be bound by the terms of the "Elecard" End-User License Agreement ("EULA"). This EULA is a legal agreement between you (either an individual or a single entity) and Elecard for the "Elecard" software product(s) accompanying this EULA, which include(s) computer software and

may include "online" or electronic documentation, associated media, and printed materials ("SOFTWARE PRODUCT").

For sales and licensing information, contact the Elecard Sales Department: sales@elecard.com

For technical support, contact the Elecard Technical Support Team: tsup@elecard.com

2. Describing Elecard Converter Studio

2.1 Converter Studio Features

Elecard Converter Studio is the program (series of programs) that performs the format conversion of media files at high-speed and with high quality. It supports the Watch Folder Mode that provides automatically converting of files from specified folder and can be started as Windows® service. The program allows user to use computing power of locally networked PCs for common task list encoding (distributed computing).

Optimal encoding parameters can be selected from the preconfigured profiles. Profiles provide the compatibility of created files with different devices such as DVD, SVCD, HDV, AVCHD®, Blu-Ray, FLV, Sony PlayStation® Portable (Sony PSP®), Sony PlayStation3®, Apple iPod®, etc. You can also create your own profile and save it for further use. The complete control over encoding parameters and extra facilities allow you to solve professional tasks.

Elecard Converter Studio has the following features:

- **Watch Folder mode.** The program automatically scans the specified input folder and converts new media files according to the selected profile.
- **Work as Windows® service.** Allows the Watch Folder mode start as Windows® service. It is used only in Pro/Pro HD versions.
- **Console application mode.** The program can be started as console application that supports both the single file converting and the Watch Folder mode.
- **MPEG-2 Encoding.** Widespread and high-quality encoding format. It allows you to create DVD, HDV, and Blu-ray compatible files that can be used for further recording to discs and other storages.
- **Intel® Quick Sync Video.** Allows encoding of AVC/H.264 streams using the Intel® Quick Sync Video technology. It speeds up the encoding process even to 10 times.
- **MPEG-4 ASP and AVC/H.264 Encoding.** Foremost encoding format that is used in wide application area from network broadcasting to encoding of FullHD video for HD-DVD and Blu-ray storages.
- **DV Encoding.** Allows saving video into AVI DV format. It is a widely used format for video editing. The format provides easy editing and the optimal proportion of encoding quality to the output file size.

- **Saving video to uncompressed or lossless format.** Allows saving video to uncompressed AVI or using lossless encoding (to make file size smaller).
- **Two pass MPEG-2 and AVC/H.264 encoding.** Allows encoding quality improvement.
- **Fast first pass for two pass encoding.** Allows encoding acceleration in two pass mode. The total encoding time is reduced up to 30%.
- **MPEG-1/2 Layer I/II, AAC, LPCM and WAV PCM audio encoding.** Support of different audio formats allows selection of the optimal encoding format for every task.
- **Work with DVD.** Allows conversion of the whole DVD or only the selected parts.
- **Advertisement insertion.** Allows advertisements adding to a file during conversion.
- **Specifying part for transcoding.** Allows transcoding the specified part of the file.
- **Chapter Points adding.** Allows adding key frames to the specified positions during video encoding in MPEG-2 format.
- **Extended access to components settings.** Allows complete control over encoding parameters.
- **Work with multichannel streams.** Allows you to open multichannel stream, to select the required tracks for work, and to create multichannel streams with individual settings for each track. Work with MPEG multiplexer is adapted for multiprogram files creation. It is used only in Pro/Pro HD versions.
- **Stream Copy mode for video and audio.** The mode of the original track transferring from the input file to the output file without conversion. It accelerates the conversion process and keeps the data quality.
- **Multiplexing into AVI, FLV, MP4, 3GPP, AVCHD®, MPEG-1 SS, MPEG-2 PS/TS and elementary streams saving.** Provides wide application of the output files.
- **MPEG streams indexing.** Provides index files creation for encoded MPEG files. This option is necessary for broadcasting.
- **Set of preconfigured profiles for optimal encoding.** Provides easy creation of files that are compatible with different devices.
- **Profiles creation, editing and saving.** Provides creation and further use of the user original profiles.
- **Cluster encoding.** Encoding of common task list using the computing power of locally networked PCs (distributed computing).

Elecard Converter Studio is available as Elecard Converter Studio Mobile, Elecard Converter Studio AVC HD, Elecard Converter Studio, Elecard Converter Studio Pro и Elecard Converter Studio ProHD. Each version is intended for a certain range of tasks and provides respective

functionality. The table below specifies features that are available in the different Elecard Converter Studio versions.

Table 1. Elecard Converter Studio and Elecard Converter Studio Pro/Pro HD Features

Features	Mobile	AVCHD	Consumer	Pro	ProHD
Supported Input Formats					
MPEG-1/2	√	√	√	√	√
MPEG-4 ASP	√	-	√	√	√
AVC/H.264	√	√	√	√	√
DV25	√	√	√	√	√
DVC Pro 50/100	-	-	-	√	√
DVD	√	-	√	√	√
MPEG-1 Layer 1/2/3	√	√	√	√	√
LPCM	√	√	√	√	√
AAC	√	-	√	√	√
Supported Video Encoding Formats					
Maximal resolution limits	√ (720x576)	-	-	√ (720x576)	-
MPEG-1/2	√ (MP@ML)	√ (MP@HL)	√ (MP@HL)	√ (HP@HL)	√ (HP@HL)
MPEG-4 ASP	√	-	√	√	√
AVC/H.264	√ (Main@3.1)	-	√ (High@5.1)	√ (High@5.1)	√ (High@5.1)
DV25	√	√	√	√	√
Supported Audio Encoding Formats					
MPEG-1/2 Layer I/II	√	√	√	√	√
AAC	√	-	√	√	√
LPCM	√	√	√	√	√
WAV PCM	√	√	√	√	√
Multiplexing Formats					
RAW	√	√	√	√	√
AVI	√	√	√	√	√
FLV	√	√	√	√	√
MP4	√	-	√	√	√
3GPP	√	-	√	√	√
AVCHD®	-	√	√	-	√
MPEG-1 SS	√	√	√	√	√
MPEG-2 PS	√	√	√	√	√
MPEG-2 TS	-	√	√	√	√
Miscellaneous					
Denoising	-	√	√	√	√
Sound correction	-	√	√	√	√
Logo insertion	-	-	-	√	√
Chapter Point	-	-	-	√	√
Advertisement insertion	-	-	-	√	√
Enhanced file processing mode	-	√	√	√	√
Indexing of output MPEG files	-	-	-	√	√
MPEG-2 TS files encryption	-	-	-	√	√
Encoding with constant bitrate (CBR)	-	-	-	√	√
General settings of video encoders	-	√	√	√	√
Advanced settings of encoders	-	-	-	√	√

Features	Mobile	AVCHD	Consumer	Pro	ProHD
Advanced settings of MPEG-2 TS multiplexer	-	-	-	√	√
Creation of multiprogram streams	-	-	-	√	√
Watch Folder mode	-	-	-	√	√
Console application mode	-	-	-	√	√
Converter Studio service	-	-	-	√	√
Cluster encoding *	-	-	-	√	√
HASP HL protection	-	-	-	√	√

* - Delivered as option for Pro/Pro HD versions.

2.2 Specifications

Elecard Converter Studio supports the following multiplexed output formats:

- MPEG-1 System Stream (ISO/IEC 13818-1)
- MPEG-2 Program Stream (ISO/IEC 13818-1)
- MPEG-2 Transport Stream (ISO/IEC 13818-1)
- AVCHD® streams
- MP4 ISO compatible files (ISO/IEC 14496-14)
- MP4 Sony PSP compatible files
- MP4 Apple iPod compatible files
- MP4 ISMA compatible files
- MP4 3GPP compatible files
- FLV compatible files
- AVI files
- ES Annex B Type II (ISO/IEC 11172-1)

Elecard Converter Studio supports the following output elementary stream formats:

- AVC/H.264 High Profile (ISO/IEC 14496-10)
- MPEG-4 ASP (ISO/IEC 14496-2)
- MPEG-1 (ISO/IEC 11172-2)

- MPEG-2 HL@HP (ISO/IEC 13818-2)
- DV25 (SMPTE 314M-1999)
- AAC (ISO/IEC 13818-7)
- MPEG-1/2 audio Layer I/II (ISO/IEC 11172-3, ISO/IEC 13818-3)
- LPCM
- WAV PCM
- AVI Uncompressed files
- HuffYUV AVI
- DVB subtitles
- Closed Captions EIA-608, EIA-708
- Teletext subtitles

Elecard Converter Studio supports the following input formats:

- AVI Uncompressed files (RGB, YV12, YUY2)
- DV25, DV50, DV100, MPEG-4 SP/ASP (AVI, MOV files)
- AVS (Avisynth Script)
- MPEG-1/2 (MPEG PS/TS, VES, ES, XPL)
- MPEG-4 SP/ASP (MOV, MP4, MPEG PS/TS, VES, XPL)
- AVC/H.264 (MOV, MP4, MPEG PS/TS, VES, XPL)
- LPCM
- WAV PCM
- Dolby Digital
- MPEG-1 Audio Layer II
- MPEG-1 Audio Layer III
- AAC (Advanced Audio Codec)

3. Elecard Converter Studio Interface

This section describes the Elecard Converter Studio GUI.

Figure 1. Elecard Converter Studio – Main Window



- **Batch List** panel is the main program window that displays information about the tasks that will be converted. It also enables to manage tasks, change their settings and launch conversion process.
- **Profiles** panel contains the available profiles list with the brief description of their settings.
- **Task Parameters** panel allows quickly setting any task parameters and adding optional filters if they are required.
- **Messages** panel displays various information when the converting process is started. In particular, it displays warning messages if the encoder parameters or the other components are set incorrectly.
- **Preview** panel allows viewing the input media file.

- **Cluster** panel displays the list of cluster nodes and allows the node control.
- **Watch Folder Mode** panel allows task creation and control in the Watch Folder mode.
- **Statistics** panel displays the encoding process information.

3.1 Main Menu

The program main menu provides convenient access to the frequently used commands. All of the commands are divided into groups.

Figure 2. Elecard Converter Studio – Main Menu



Figure 3. Elecard Converter Studio – Main Menu – File

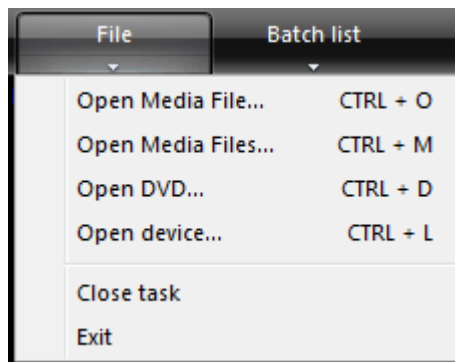


Figure 4. Elecard Converter Studio – Main Menu – Batch List

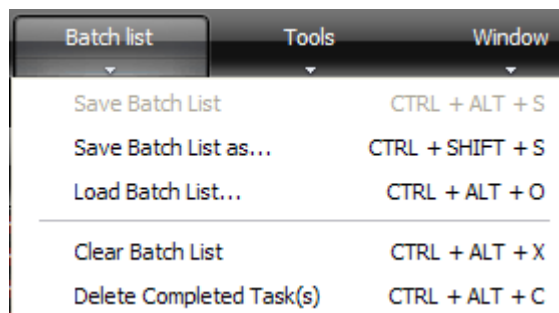


Figure 5. Elecard Converter Studio – Main Menu – Tools

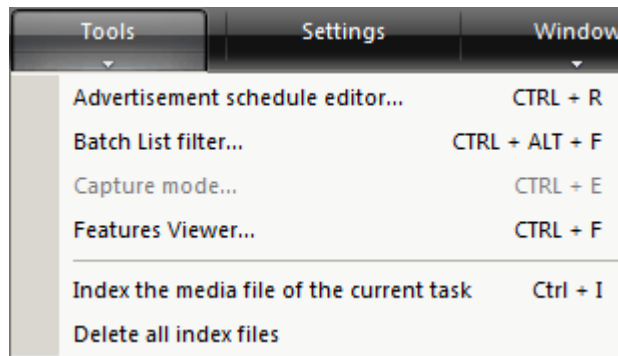


Figure 6. Elecard Converter Studio – Main Menu – Window

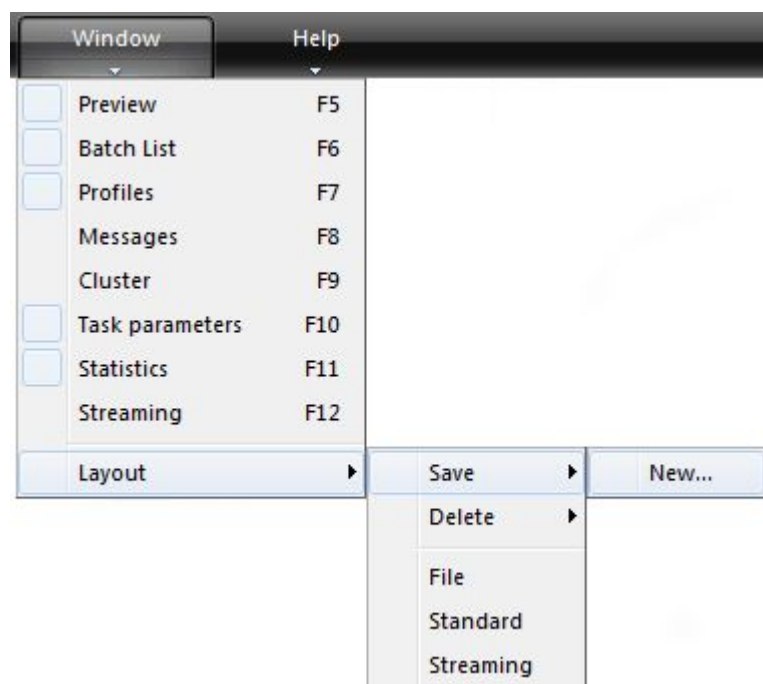
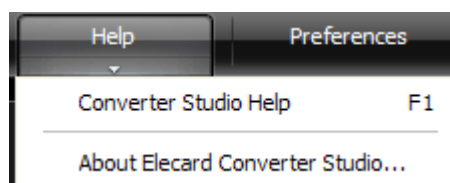


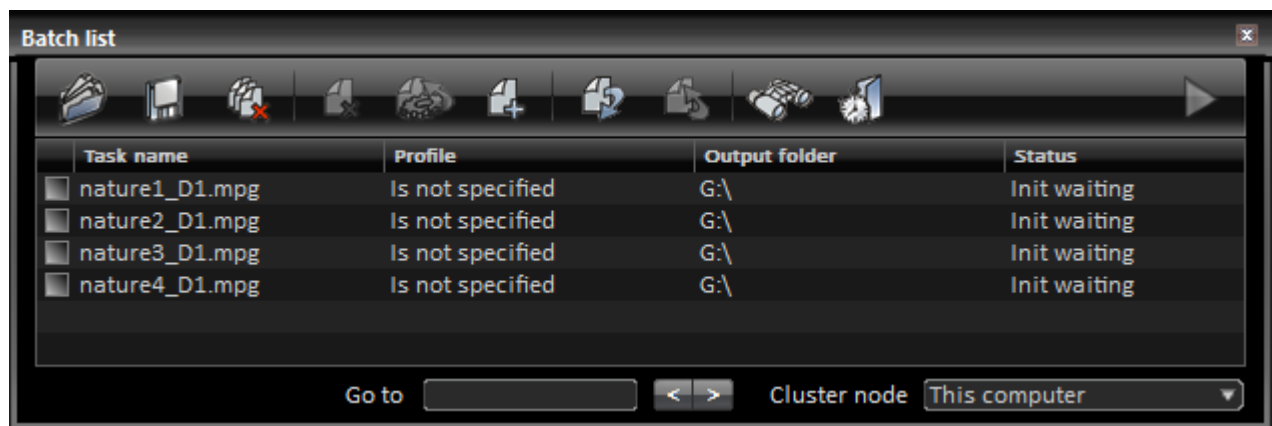
Figure 7. Elecard Converter Studio – Main Menu – Help



3.2 Batch List Panel

When you start Elecard Converter Studio for the first time, the Batch list is empty. Tasks will be created after media files are added to the Batch list for conversion. Each task has the following information: name, conversion profile, status and path of the output folder for the converted files.

Figure 8. Elecard Converter Studio — Batch List Panel



Besides, the **Batch List** panel contains control buttons that are essential to manage tasks. They are as follows:



— **Load Batch List.** Click this button to load the earlier saved list of tasks. When a new tasks list is loaded, the previous one is cleared.



— **Save Batch List.** Click this button to save the Batch list in order to open and use it later.



— **Clear Batch List.** Clears the Batch list.



— **Delete Selected Task.** Deletes the selected tasks from the Batch list.



— **Fast Task Profile Changing.** Allows quickly changing the conversion profile and the output folder of the selected tasks. For more information see Section “Fast Profile Changing”.



— **Add File(s) to Batch List.** Click this button to add media files to the Batch list. Open files are added to the Batch list. They have the **Init waiting** status. To prepare a task for conversion, apply a profile to the task. After it, this task has the **Waiting** status. For more information see Section “Profile Applying”.



— **Add (Save) Task to Batch List.** Allows saving the parameters of the changed task to the Batch list.



— **Change Task Parameters.** Allows quickly and visually setting any task parameters and adding optional filters if they are required. A task is changed on the **Task Parameters** panel. For more information see Section “Task Parameters Changing”.



— **Batch List Filter.** Allows selection files for conversion according to the specified


parameters. For more information see Section “Batch List Filter”.



— **Watch Folder Mode.** Sets and starts the Watch Folder mode. For more information see Section “Watch Folder Mode”.



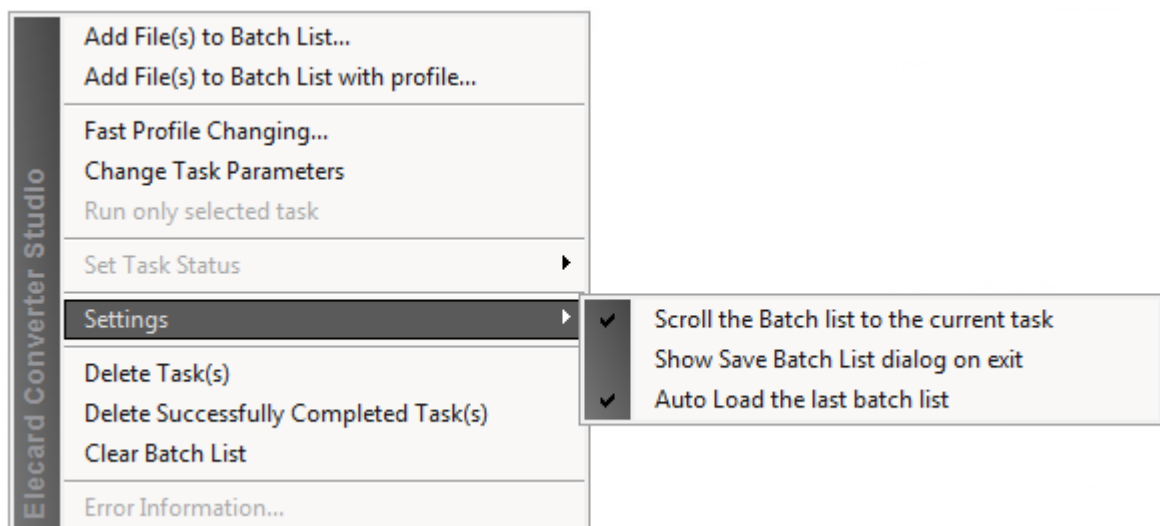
— **Run Batch List Encoding.** Starts or stops the Batch list encoding.

The **Go to** text box is intended for search of the task in task list. The task that name contains the typed string is highlighted in the task list. The buttons  move highlighting to the previous or next task in the search list (tasks with names containing the typed string).

The **Cluster node** box specifies the node that task list must be displayed at the moment.

Many options are also available in the shortcut menu. The menu appears when the user clicks the right mouse button on the **Batch List** panel.

Figure 9. Batch List — Shortcut Menu



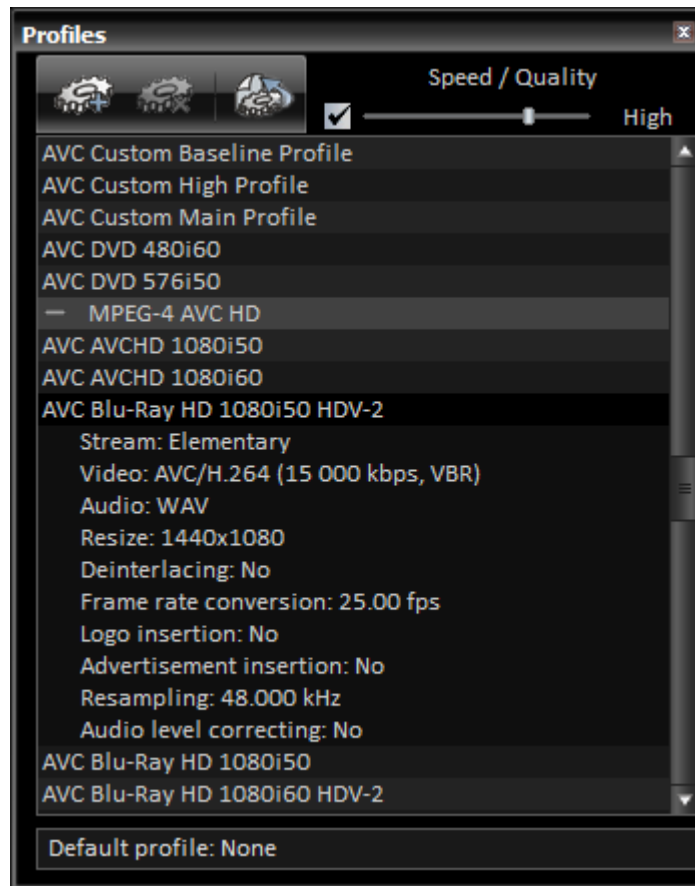
- **Add File(s) to Batch List...** — adds media files to the Batch list. The task parameters must be adjusted before the encoding process start. For more information see the *Task Parameters Changing* section.
- **Add File(s) to Batch List with profile...** — adds media files to the Batch list with profile. In this mode, when the file is opened, the encoding profile and output folder must be specified in the appeared window. For more information see the *Task Parameters Changing* section.
- **Fast Profile Changing...** — allows fast changing of the encoding profile and output folder for the group of selected files.
- **Change Task Parameters** — allows adjustment of the selected task parameters.

- **Run only selected task** — runs only the task selected from the Batch list.
- **Set Task Status** — disables the task or sets the **Waiting** status to the task.
- **Scroll the Batch list to the current task** — enable the Batch list scrolling to the current task.
- **Show Save Batch List dialog on exit** — enables the **Save Batch List** dialog box displaying on the program exit. If this option is disabled, the Batch list is saved automatically to a temporary file.
- **Auto load the last Batch list** — enables automatic loading of the last opened Batch list.
- **Delete Successfully Completed Task(s)** — deletes all completed task(s) from the Batch list. This option is disabled in the Watch Folder mode.
- **Error information** — displays the error information and possible ways to fix it. It happens when task encoding cannot be started and the task has the **Failed** status.

3.3 Profiles Panel

The **Profiles** panel contains ready-for-use profiles. Each profile provides the optimal encoding settings and allows creating files that are compatible with different devices such as DVD, SVCD, HDV, Blu-Ray, Sony PlayStation® Portable (Sony PSP®), Sony PlayStation3®, Apple iPod® and etc. There is overall information about the encoding parameters of every profile: audio and video format, bitrate and optional filters presence.

Figure 10. Profiles Panel



There are control elements at the upper-left corner of the panel.



— **Add New Profile.** Allows saving the open task parameters as profile. After saving, the profile appears in the profiles list and can be applied to other tasks.



— **Delete Profile.** Deletes a profile from the available profiles list. The profiles supplied with the program are protected from deletion.

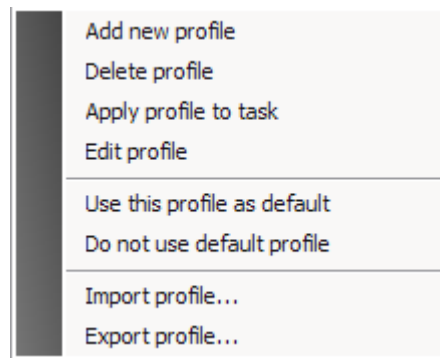


— **Apply Profile to Task.** Applies the selected profile to the task.

The shortcut menu is available in the **Profiles** panel. The menu contains the following commands:

- **Use profile as default** — sets the profile that will be applied to all of opened files.
- **Import profile** — imports the profile created and saved previously into the profile list.
- **Export profile** — exports a profile from the list.

Figure 11. Profiles – Shortcut Menu



In addition to the controls, there is the **Speed/Quality** slider. Some profiles allow speed/quality ratio adjustment for encoding. Use the **Fastest** mode in order to adjust the maximum encoding speed. And vice versa, the **Highest** mode provides the maximum quality. The optimal speed/quality ratio is set with the **Optimal** mode.

Note: Speed/quality ratio should be adjusted before applying a profile.

3.4 Task Parameters Panel

The **Task Parameters** panel opens by double-clicking any task in the **Batch List**. This panel allows quickly and visually changing the encoding and decoding parameters. The task parameters are grouped as tabs by its features. Click the appropriate button to set the parameter group.

Figure 12. Task Parameters Panel



— **Input File Information** displays general information about the current tracks in the task. For more information see Section “Input File Information”.



— **Stream Type Parameters** allows selecting the output stream type and changing MPEG multiplexer parameters. For more information see Section “Stream Type Parameters” and Section “MPEG Multiplexer Advanced Settings”.



— **Video Encoding Parameters** allows setting video encoder parameters. Any parameters can be individual for every track. For more information see Section “Video Encoding Parameters” and Section “Advanced Encoding Settings”.



— **Picture Transformation** changes decoding parameters and applies appropriate filters to the picture. For more information see Section “Picture Transformation Parameters”.



— **Logo and Advertisement Insertion** overlays a static picture on the video during conversion and inserts advertisement in the file. For more information see Section “Logo and Advertisement Insertion”.



— **Audio Encoding Parameters** allows setting audio parameters and using optional filters for work with audio streams. For more information see Section “Audio Encoding Parameters”.

3.5 Preview Panel

The **Preview** panel allows viewing the source video and controlling its playback. There are the following control buttons on the panel:

Figure 13. Preview Panel



— **Play**. Starts media file playback.



— **Pause.** Pauses media file playback.



— **Next/Previous.** Plays forward and backward frame by frame in the Pause mode.



— **Slider.** Quickly moves to the required file position.



— **Specifies the beginning and the end of the part for encoding.** Specifies the frame where the track encoding will be started, and the frame where the track encoding will be finished.



— **Go to the beginning/end of the part for encoding.** Sets current position to the first/last frame of the part for encoding.



— **Remove the encoding part boundaries.** Disables the partial encoding mode. The selected track will be converted entirely.

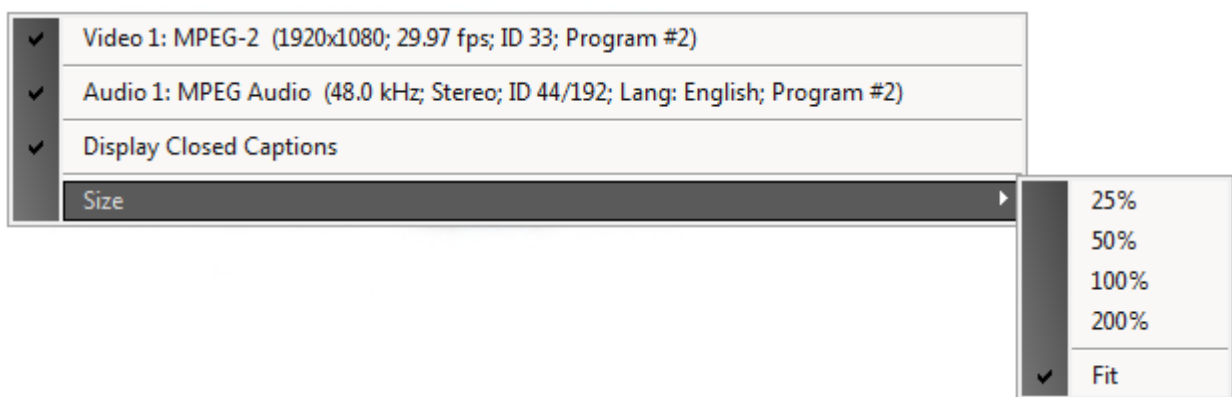


— **Adds chapter points.** Adds key frames to the specified positions during the encoding process. For more information see Section “Add Chapter Points”.

In addition to the controls, file duration and current playback position are displayed on the **Preview** panel.

You can right-click in the **Preview** panel to open the shortcut menu. The menu allows the user to select video and audio channels for preview, to enable DVD, DVB, Teletext subtitles and Closed Caption option, and to set the video window size.

Figure 14. Preview Panel — Shortcut Menu



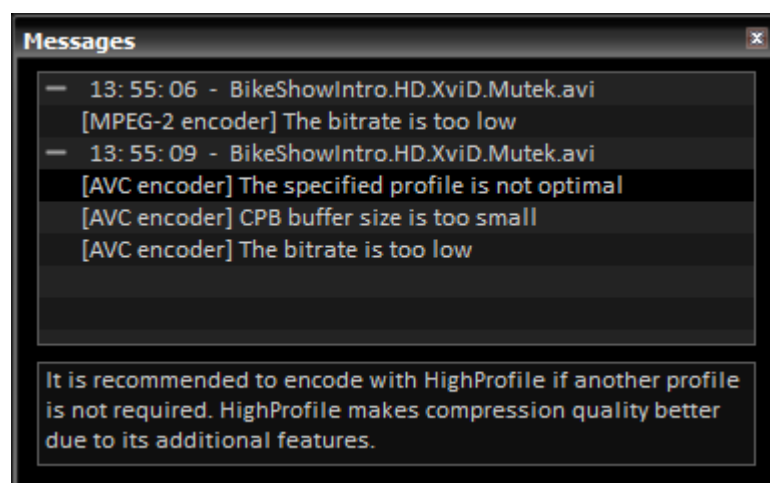
This menu allows scaling the preview window or spreading it up to the maximum size.

3.6 Messages Panel

The **Messages** panel displays various information when the converting process is started. In particular, it displays warning messages if the encoder parameters or the other components are set

incorrectly. The program checks all task parameters when you edit a task and save it to the Batch list, and sends warning messages if some errors are detected. Click the message text to display the detailed information at the lower part of the window. If you are sure that the settings are correct and want to stop checking and displaying messages, disable this option in the program settings.

Figure 15. Messages Panel



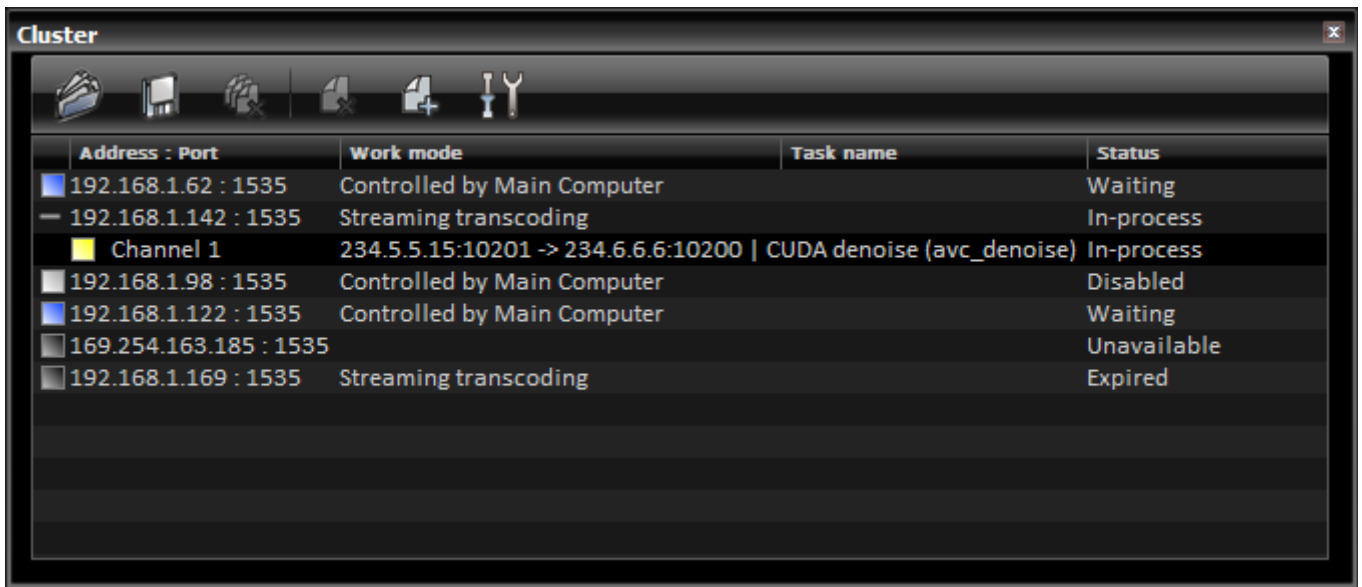
3.7 Cluster Panel

The **Cluster** panel allows Converter Studio to use computing power of locally networked PCs for common task list encoding (distributed computing).

The cluster node works in one of the following modes:

- **Independent Watch Folder.** The nodes working in this mode perform folder monitoring independently of one another and of main computer. Work folder, profile, and additional settings are specified for each node.
- **Controlled by main computer.** In this mode the tasks from list are distributed among the available nodes. Each node encodes its task using the specified profile and settings. The main computer can be used for the nodes control and for encoding of tasks from the common list. It is specified in the program settings.

Figure 16. Cluster Panel




In the beginning of work the cluster node must be added to the list of available computers. To add node click the **Add cluster node** command from the shortcut menu (right-click opened) or click the button . Set the selected node parameters on the appeared **Cluster node parameters** dialog.

Figure 17. Cluster Node Parameters Dialog

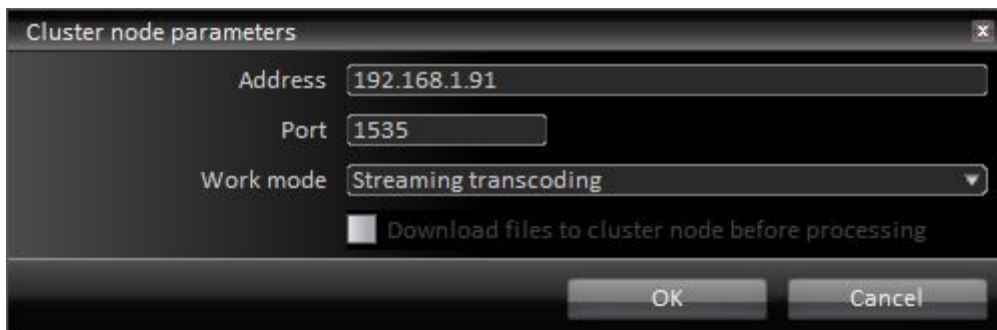


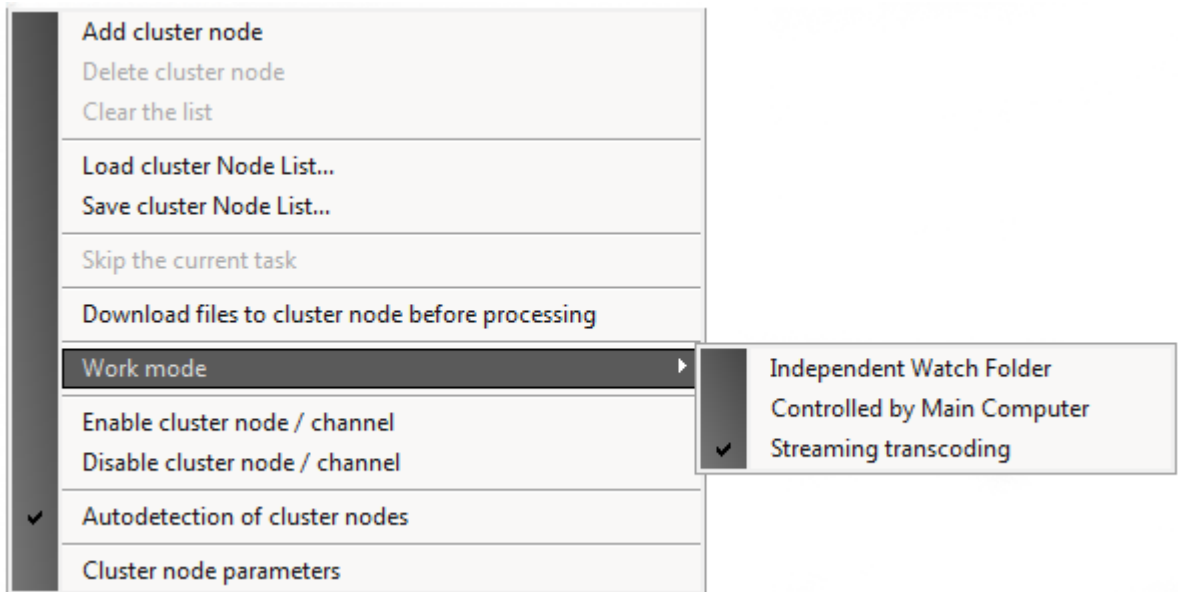
Table 2. Cluster Node Parameters Dialog Controls



Control	Description
Address	Specifies the IP address of remote computer on which the Converter Studio service is installed. The service installation and adjustment are described in the <i>Converter Studio Service Manager</i> section.
Port	Specifies the service control port.
Work mode	Specifies the service work mode: <ul style="list-style-type: none"> • Independent Watch Folder. The nodes working in this mode perform folder monitoring independently of one another and of main computer. Work folder, profile, and additional settings are specified for each node. • Controlled by main computer. In this mode the tasks from list are distributed among the available nodes. Each node encodes its task using the specified profile and settings. The main computer can be used for the nodes control and for encoding of tasks from the common list. It is specified in the program settings.


Control	Description
Download files to cluster node before processing	If the option is selected, media-files are downloaded into a temporary folder on the node hard disk before the task processing. Output files are also created in a temporary folder located on the node HD. After the task completion the output files will be copied from the temporary folder to the output folder. The default path of temporary folders is 'C:\'. The path can be changed in the <i>config.xml</i> file (located in the program folder).

Most of options are adjustable via the shortcut menu (right-click the **Cluster** window):

Figure 18. Cluster Shortcut Menu



- **Add cluster node** — adds cluster node to the available nodes list.
- **Delete cluster node** — deletes cluster node from the available nodes list. The same operation can be done with the button  click.
- **Clear the list** — clears the available nodes list. The same operation can be done with the button  click.
- **Skip the current task** — allows the current task skipping on any node. Select the node and click the **Skip the current task** command.
- **Download files to cluster node before processing** — enables downloading of the input files to the cluster node before task processing. Encoded data is stored to the file that is located in the temporal folder of cluster node. After encoding is completed, the output files are copied to the output folder.
- **Work mode** — selects the cluster node work mode.
- **Enable cluster node/channel** — turns on the cluster node/channel.

- **Disable cluster node/channel** — turns off the cluster node/channel. The node is displayed in the available nodes/channels list but does not perform encoding.
- **Autodetection of cluster nodes** — allows automatic search for available cluster nodes. The detected node is added to the list in off state. After addition the node must be tuned and turned on using the shortcut menu.
- **Synchronize with Statistics window** — allows synchronization of the **Statistics** panel information with the channel selected in the **Cluster** window.
- **Cluster node parameters** — allows tuning of the cluster node displayed in the list. The same operation can be done with the button  click. The **Cluster node parameters** dialog will be displayed in the form corresponding to the selected work mode. The Watch Folder mode is described in the *Watch Folder Mode* section.

3.8 Watch Folder Mode

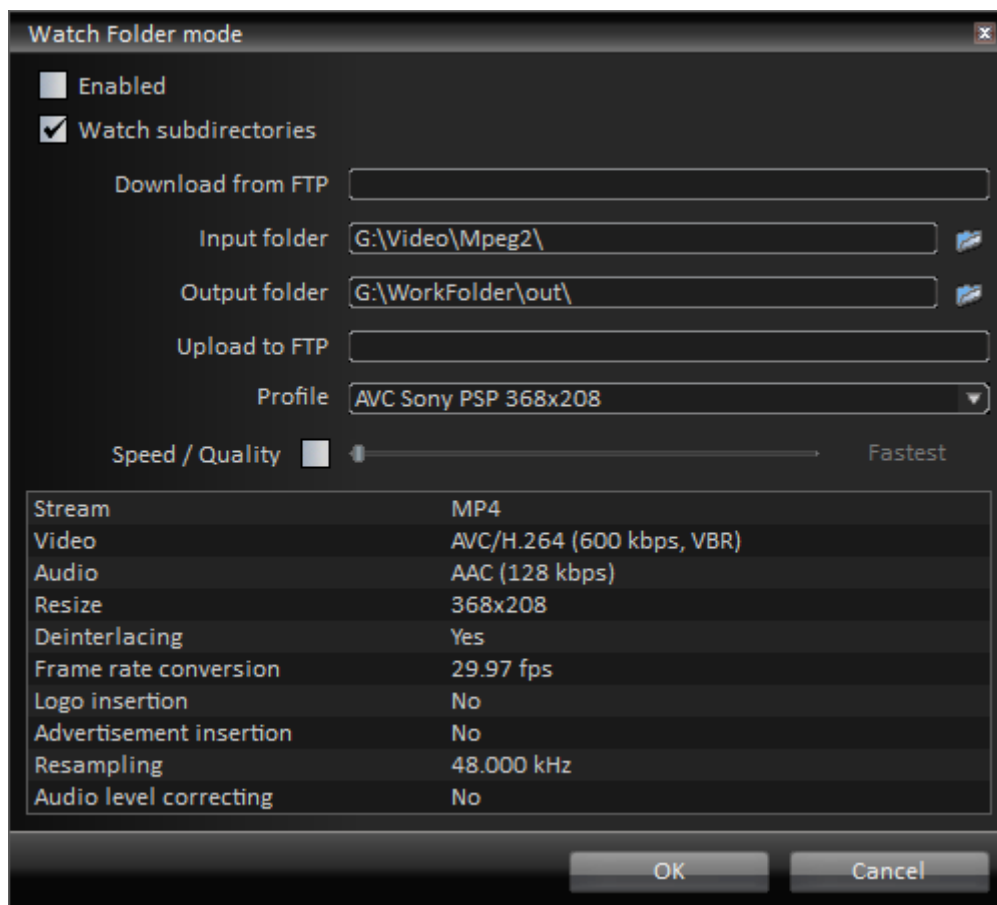
The Watch Folder mode provides the automatic conversion of any media files that are located in a folder or on a FTP server using the selected profile. If this mode is enabled, the program monitors the folder or FTP server content, creates tasks for every media file in Batch list and starts encoding. During the conversion process, the folder monitoring is paused. Folder monitoring is executed every 20 seconds and will continue until a new file appears in the specified folder.

Figure 19. Watch Folder Panel



To start the Watch Folder mode click the  button on the **Watch Folder** panel. Set the required parameters in the open window.

Figure 20. Tools – Watch Folder Mode



The following table describes the **Watch Folder Mode** controls.

Table 3. Watch Folder Mode Controls

Control	Description
Enabled	Enables/Disables the Watch Folder mode. In this mode the program automatically scans the selected folder (or FTP server). If media files are found in this folder, then the program creates task in the Batch list and transcodes it with the selected profile.
Watch Subdirectories	Enables/Disables subdirectory search in the input folder.
Копировать с FTP	Specifies the FTP server address for monitoring.
Input Folder	Specifies the input folder for monitoring.
Output Folder	Specifies the output folder for saving encoded files.
Копировать на FTP	Specifies the FTP server address for saving encoded files.
Profile	Allows the user to select the most suitable profile from the profiles list. The Profiles list contains the optimal parameters for encoding and provides the creating of files that are compatible with different hardware devices.
Speed/Quality	Allows the adjustment of the encoding speed/quality ratio. The Fastest mode is adjusted to the maximum encoding speed. And vice versa, the Highest mode provides the maximum quality. The optimal speed/quality ratio is provided with the Optimal mode.

To stop the Watch Folder mode, click the  button on the **Batch List** panel.

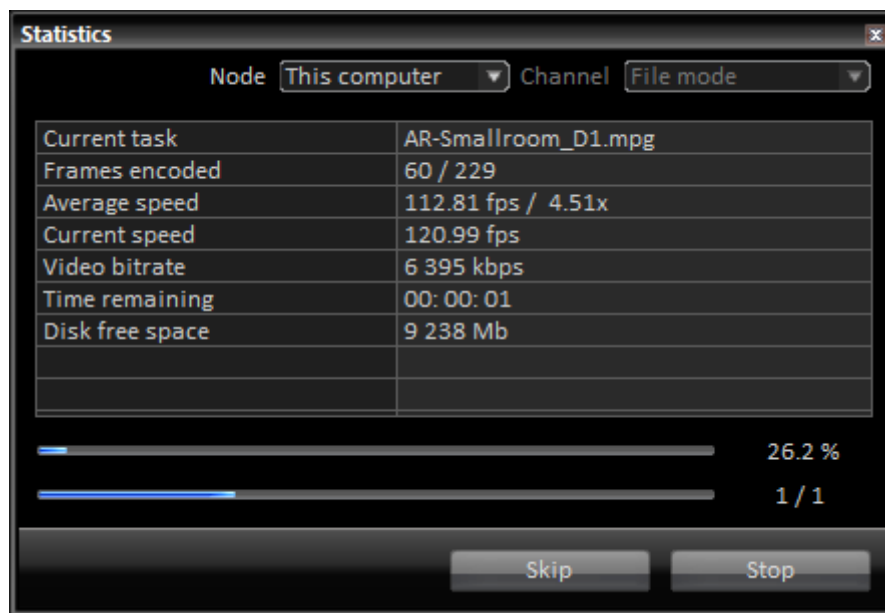
Note: *Shutdown computer after encoding option is unavailable in the Watch Folder mode.*

3.9 Statistics Panel

The **Statistics** panel displays various information about the converting process. In particular, it displays the currently encoded task name, the number of encoded frames, the encoding speed, the remaining encoding time, disk free space. In the Streaming mode the CPU usage chart is depicted as well.

The panel allows user to select the cluster node for statistical information displaying, to skip the task encoding in the File mode, and to stop the encoding process.

Figure 21. Statistics Panel – File Mode



4. Adding Files for Conversion

When you start working with Elecard Converter Studio, first open media files and add tasks for conversion.

There are some methods to add a new task:


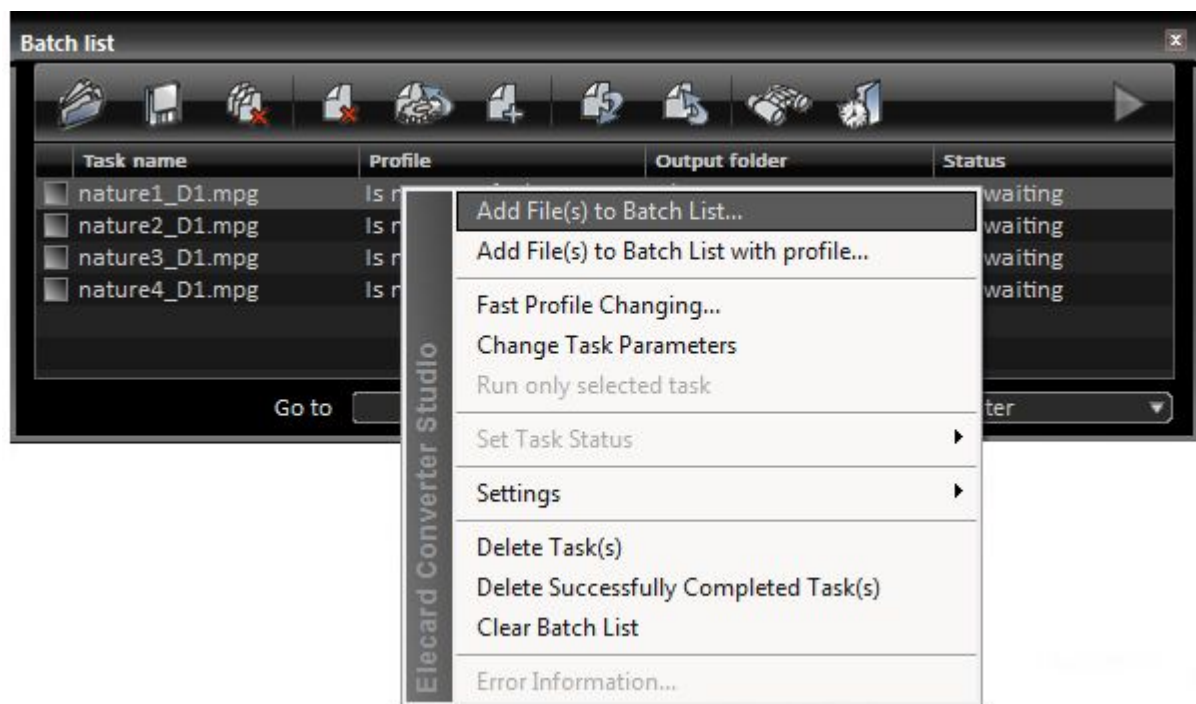
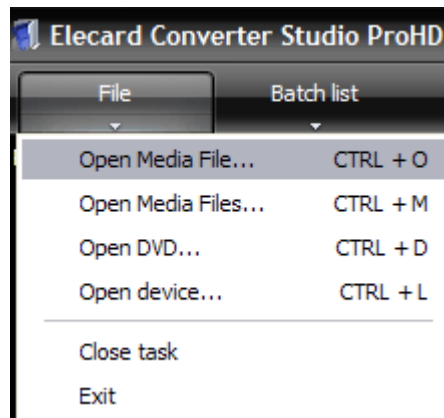
- Click  the **Add File(s) to Batch List** button on the **Batch List** panel or click the right mouse button to open the shortcut menu and select **Add File(s) to Batch List...**


Figure 22. Batch List Panel – Add File(s) to Batch List



- Select required files for conversion in the appeared window. The task with the **Init Waiting** status will be set for every file in the Batch list. It means that the profile for this task is not specified and the task will not be converted. To apply a profile and change its settings see the *Saving, Applying and Changing Task Parameters* section.
- On the **File** menu, click **Open Media file...** or press **CTRL+O**. Then select required file for conversion in the appeared window.

Figure 23. File Menu

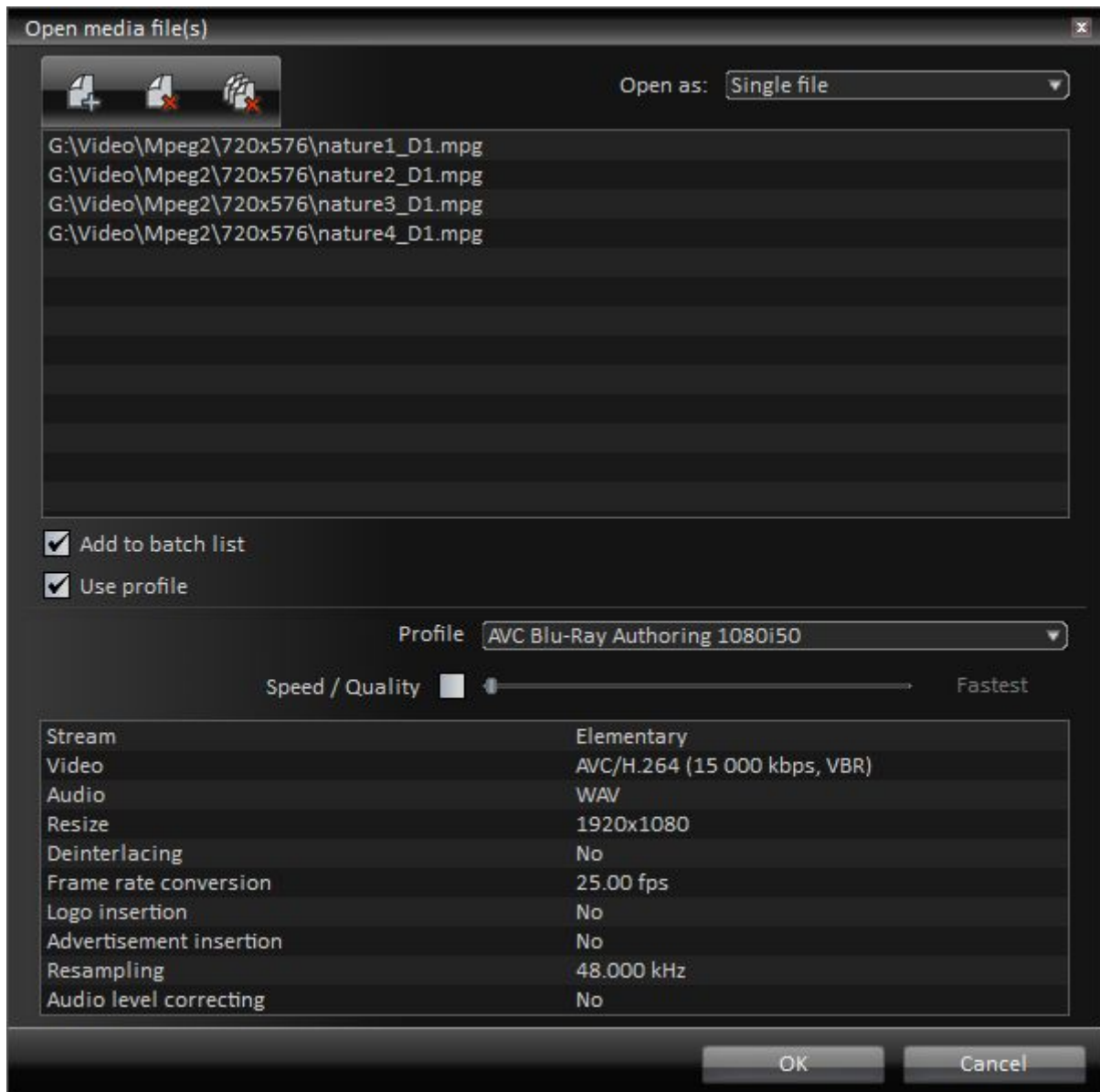




- Change encoding parameters if it is necessary and save the task in the Batch list. Click the **Save to batch list** button on the **Task Parameters** panel or click  the **Save Task to Batch List** button on the **Batch List** panel. For more information about task settings see the *Task Parameters Changing* section.

Another method to add a new task:

- On the **File** menu, click **Open Media Files...** or press **CTRL+M** to open the **Open Media File(s)** dialog box.

Figure 24. Open Media File(s) Dialog Box



This method allows opening both a separate file and also a group of files by using different modes of task setting. First, you should set a files list. So, click  button and select media files for conversion in the open window. To clear the files list use  button.

The following table describes **Open Media File(s)** dialog box controls.

Table 4. Open Media File(s) Dialog Box Controls

Control	Description
Mode	Selects media files group mode: <ul style="list-style-type: none"> • <i>Set of files</i> – Each file will be added to the Batch list according to the selected profile. • <i>Multi-Source</i> – File list will be created and then the group of files will be encoded and multiplexed into the single file.

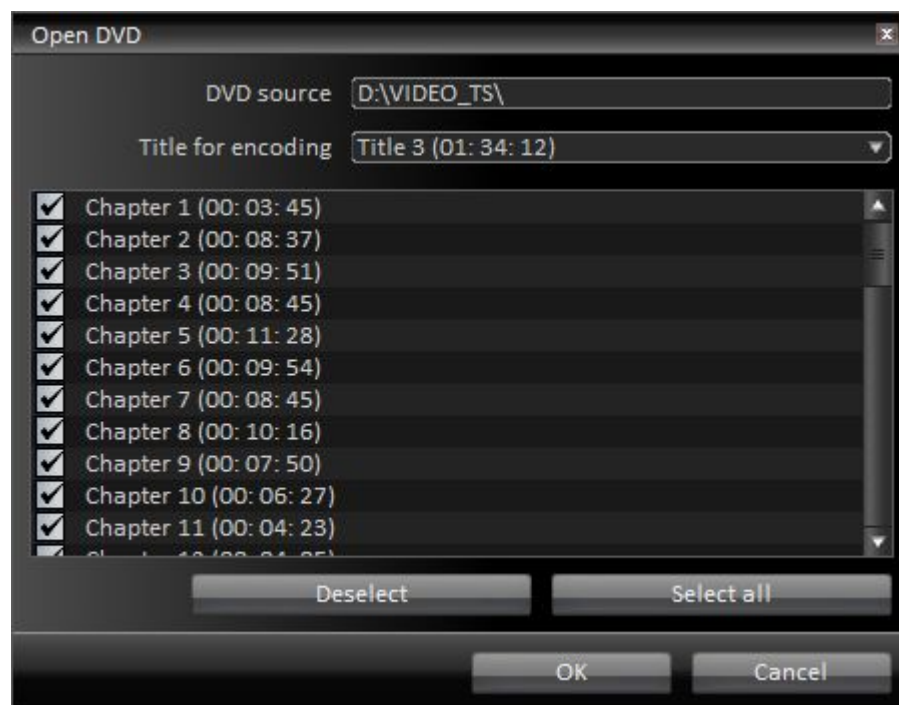
Control	Description
	<ul style="list-style-type: none"> <i>Single File</i> – All files will be opened and recoded successively.
Add to Batch list	Adds tasks to Batch list automatically according to the selected mode.
Use profile	Allows applying one profile to all tasks. If different settings are required for encoding, then this option must be disabled and tasks should be set separately.
Profile	Allows the user to select the most suitable profile from the profiles list. The Profiles panel contains the optimal parameters for encoding and provides receiving files that are compatible with different hardware devices.
Speed/Quality	Allows the adjustment of the encoding speed/quality ratio. The Fastest mode is adjusted to the maximum encoding speed. And vice versa, the Highest mode provides the maximum quality. The optimal speed/quality ratio is provided with the Optimal mode.

Note: *Single File* mode operates only with MPEG PS/TS/VES files. To work with the program correctly, set the same parameters (resolution, audio and video format, frame rate, etc.) to all files in the list.

Besides, the program allows working with DVD content. In this case the user can convert either a part of a film, recorded on DVD, or the whole film. Perform the following steps:

1. Select **File/Open DVD...** in the main program menu or press **CTRL+D**.
2. Select the folder with DVD files in the open window. Then the **Open DVD** dialog box opens.
3. Select the required DVD Titles for conversion. Unnecessary Chapters can be omitted.

Figure 25. Open DVD Dialog Box



Note: In the **Open DVD** mode it is possible to work only with DVDs without CSS (Content Scramble System) encryption.

5. Saving, Applying and Changing Task Parameters

The task has the **Init waiting** status if its profile is not specified. It means that the task will not be executed.

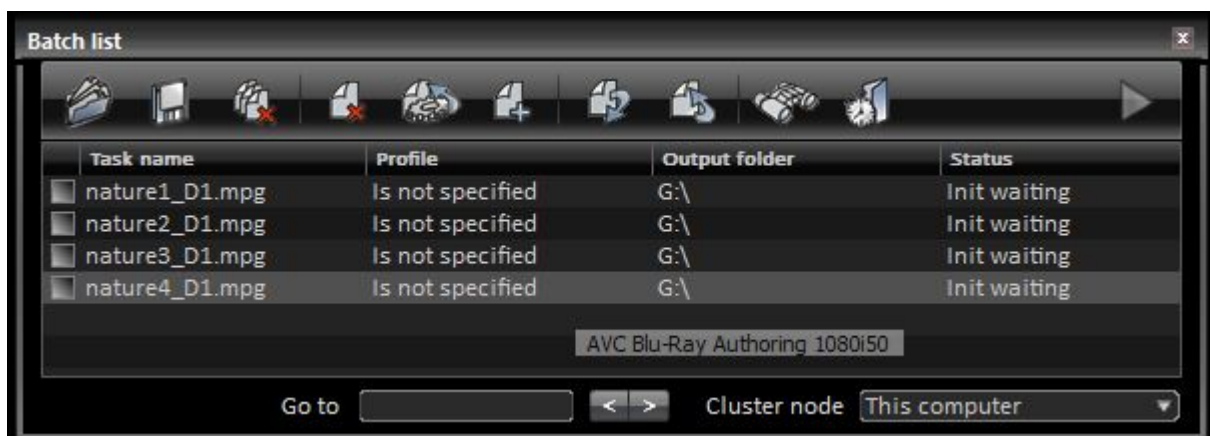
Even if the task is ready for conversion, in some cases task parameters should be changed.

There are some methods to change task settings. These methods differ from each other in features (from simple mode, when the ready profile is applied to the task, up to completely adjustable mode, when all settings are available to the user).

5.1 Profile Applying

Use the **Profiles** panel when only a profile should be applied to the task. In this case select tasks in the **Batch List** panel and drag the appropriate profile from the **Profiles** panel to the **Batch List**. You can also drag the profile to the **Task Parameters** panel and apply it to the task that is selected for editing.

Figure 26. Batch List — Profile Applying



5.2 Fast Profile Changing

The program allows quickly changing the task profile and the output folder that is used for the encoded files. Perform the following steps to change a profile:


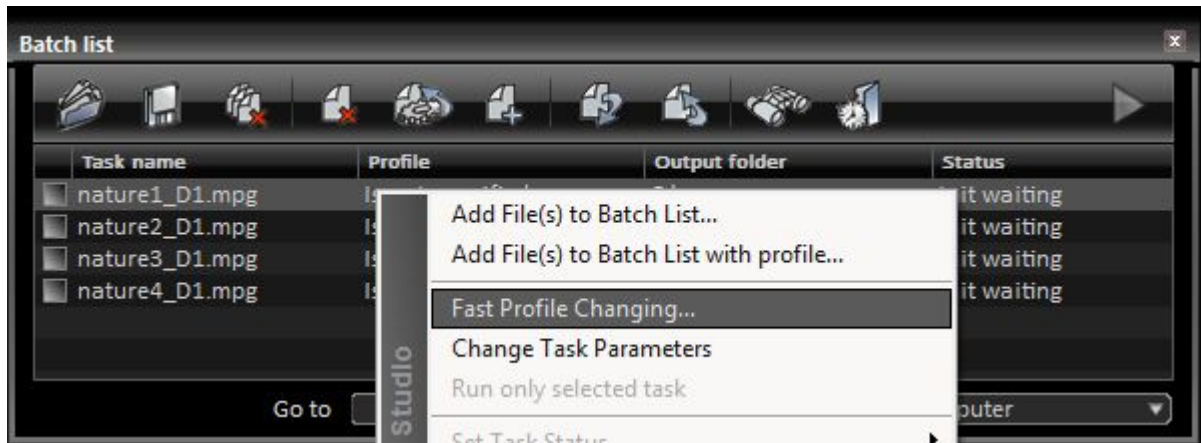
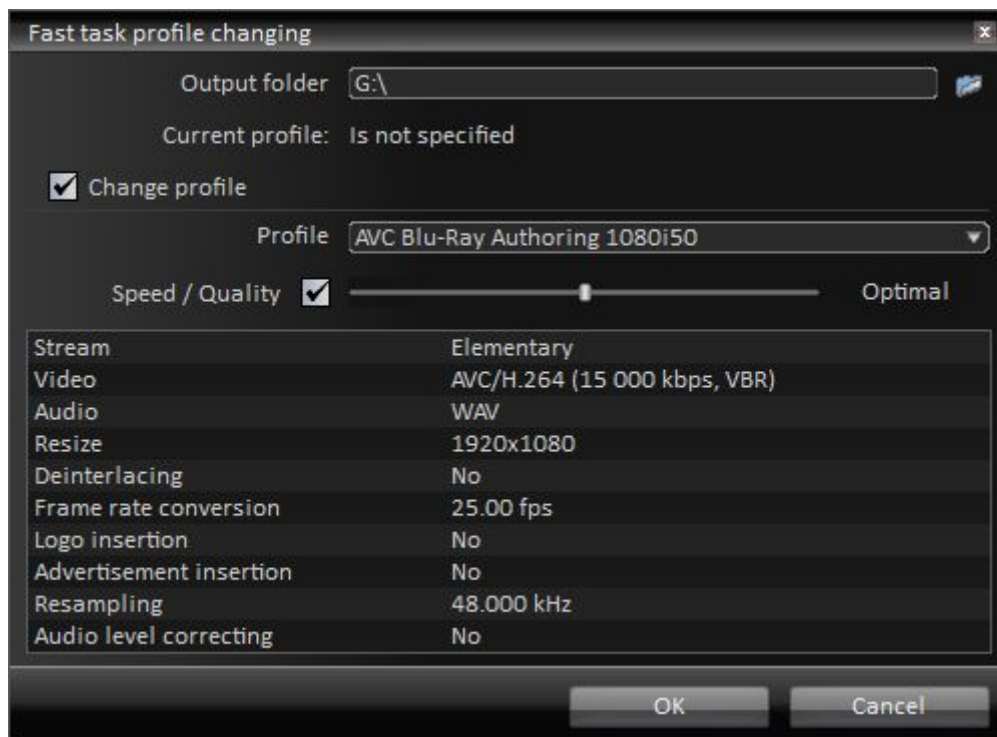
1. Click  the **Fast Profile Changing** button or use the shortcut menu by clicking the right mouse button on the **Batch List** panel.

Figure 27. Batch List – Fast Profile Changing



2. In the open dialog box you can change the profile, adjust the **Speed/Quality** ratio and specify the output folder for saving of the encoded files.

Figure 28. Fast Task Profile Changing Dialog Box



The following table describes **Fast Task Profile Changing** controls:

Table 5. Fast Task Profile Changing Dialog Box Controls

Control	Description
Output Folder	Specifies the output folder for saving of encoded files.
Current Profile	Displays the information about the current task profile.
Change Profile	Allows you to apply the same profile to all tasks.
Profile	Allows you to select the most suitable profile from the profiles list. The Profiles panel contains the optimal parameters for encoding and provides receiving files that are compatible with different hardware devices.
Speed/Quality	Allows the adjustment of the encoding speed/quality ratio. The Fastest mode is adjusted to the maximum encoding speed. And vice versa, the Highest mode provides the maximum quality. The optimal speed/quality ratio is provided with the Optimal mode.

5.3 Task Parameters Changing


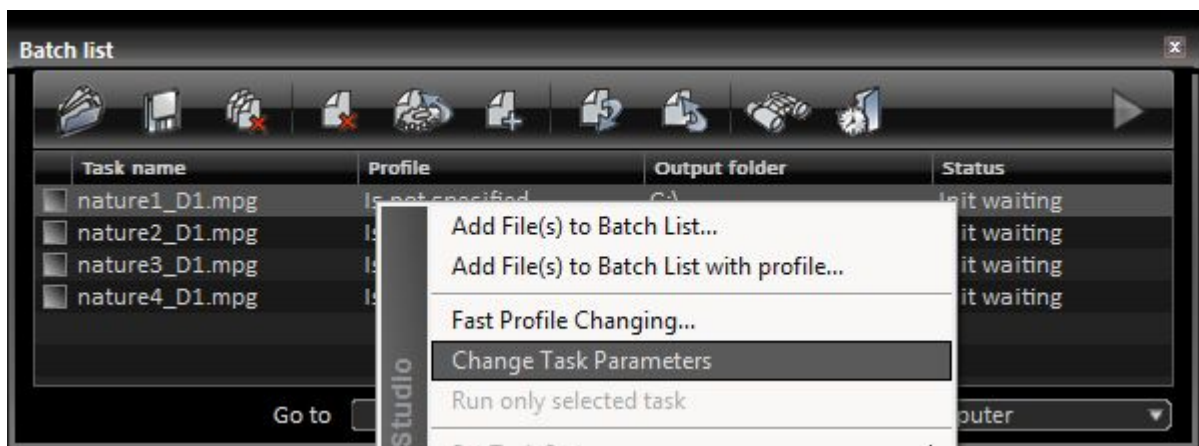

To change any task parameters (add filters, disable unused tracks, etc.) click  the **Change Task Parameters** button. Then the **Task Parameters** panel opens. You can also double-click the selected task in the **Batch List** panel to open this panel or use the shortcut menu by right-clicking the task.

Figure 29. Batch List – Task Parameters Changing



All parameters are grouped as controls by their functions in the **Task Parameters** panel.

5.4 Input File Information

Click  to open the **Input File Information** group. This group displays the path of the source file and its name, stream type, file size and its duration.

In addition, there are three tabs. The **Input** tab contains general information (audio and video format, frame rate, frame size, etc.) about all audio, video tracks and subtitles (DVD, DVB, Teletext) available in the task that is selected for editing. The **Output** tab displays the output file

information (audio and video format, frame rate, frame size, etc.). The **DVD** tab displays information about the selected title and DVD chapters.

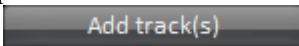
Clear the check box against the appropriate track to disable it. To add a new audio/video track from the media file to the Batch list, click  the **Add Track(s)** button and select the required file in the open window.

Figure 30. Task Parameters – Input Tab

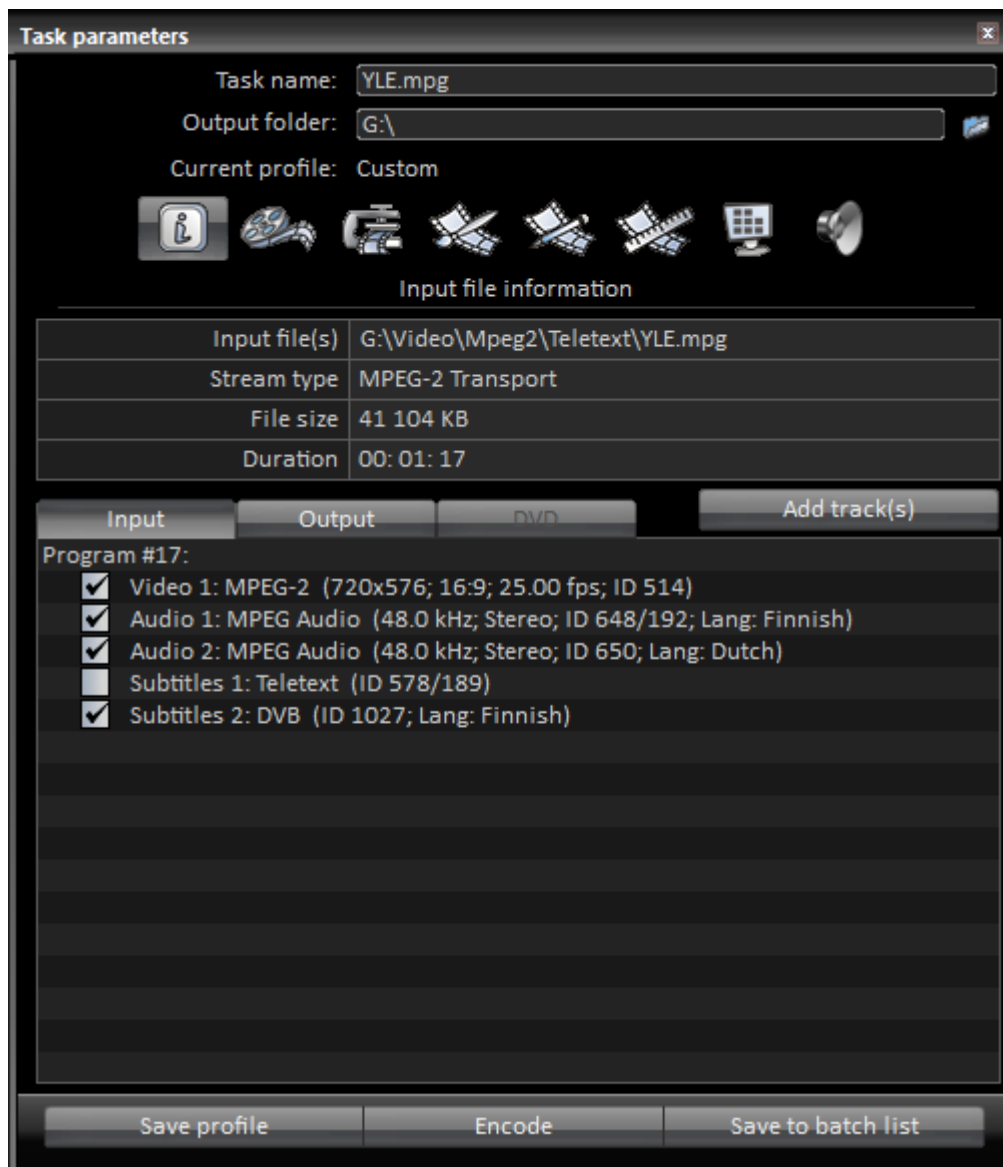


Figure 31. Task Parameters – Output Tab

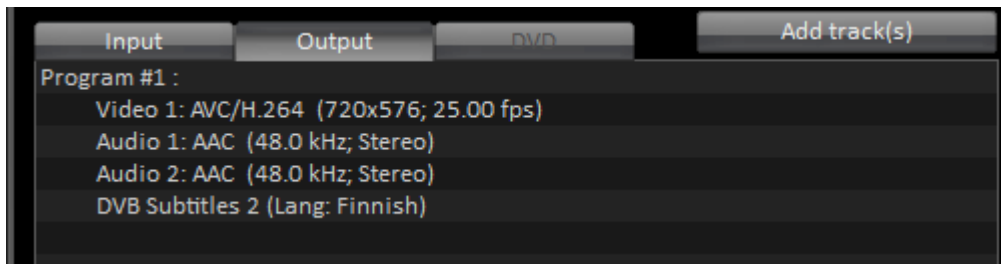
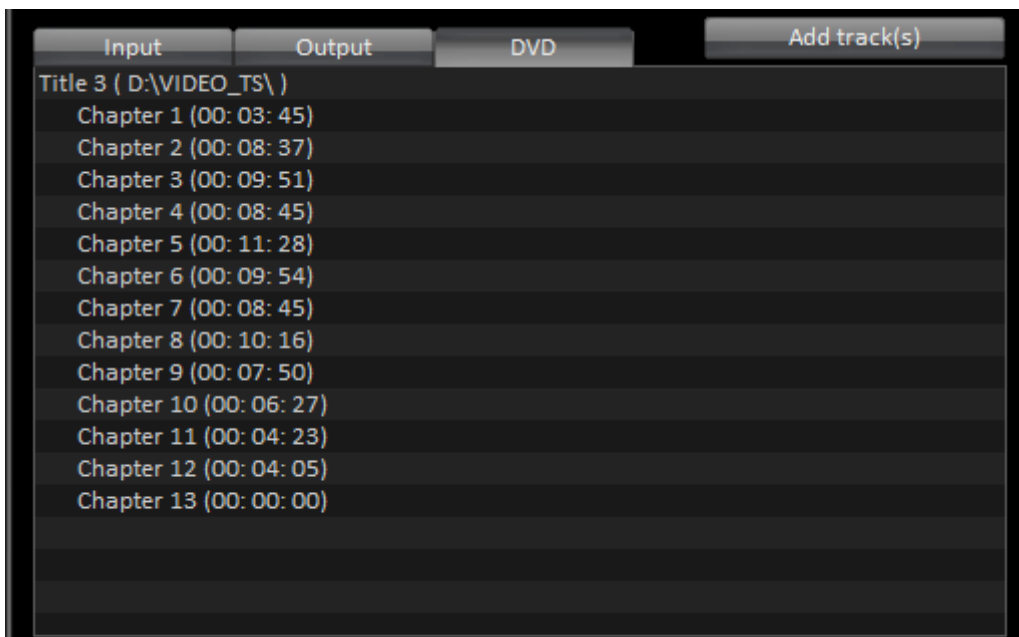



Figure 32. Task Parameters – DVD Tab




***Note:** Converter Studio provides support of subtitles during conversion of DVD files. When media data is multiplexed into Transport Stream format, DVD subtitles are transformed to DVB subtitles. Otherwise the encoded video can be overlaid with one selected subtitle track.*

5.5 Stream Type Parameters

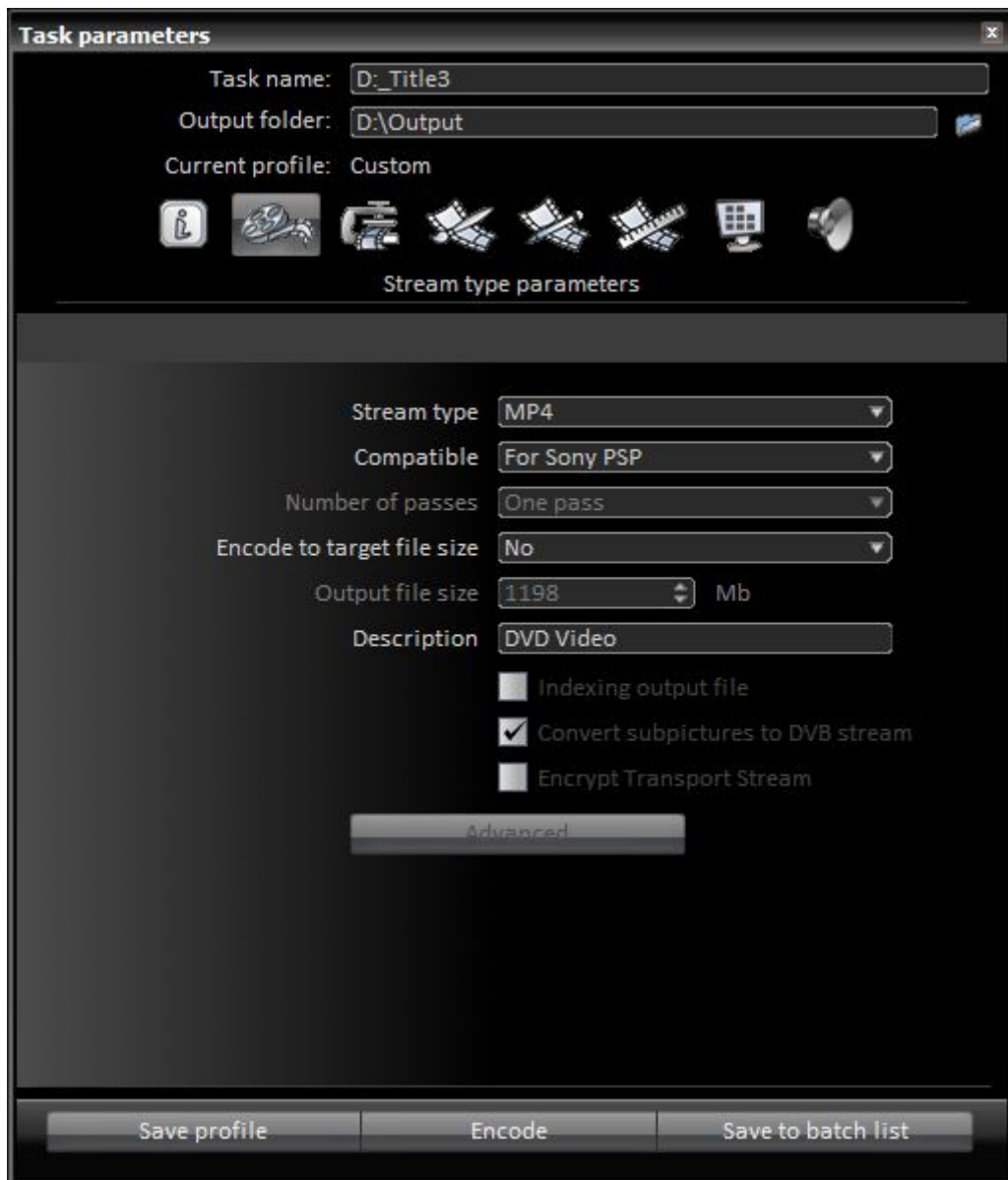
Click  button to open the **Stream Type Parameters** group. It allows changing the output file parameters: stream type, compatibility, the number of encoding passes.

The user can also see the estimated output file size and, if it is necessary to change the output size, encode to the target file size. By encoding file into the specified size the video bitrate is automatically adjusted according to the file duration and its required size. The audio track bitrate is set manually and remains unchanged. The "Encode to the target file size" mode is available only for 3GPP, FLV, MP4, MPEG-1 SS, MPEG-2 PS or MPEG-2 VES formats.

Click  the **Advanced** button to open MPEG/MP4 multiplexer advanced settings. For more information about MPEG multiplexer advanced parameters see Section 6,

“MPEG Multiplexer Advanced Settings”.

Figure 33. Task Parameters – Stream Type Parameters




The following table describes **Stream Type Parameters** controls.

Table 6. Task Parameters – Stream Type Parameters Controls

Control	Description
Stream Type	<p>Allows selecting the output stream type. Depending on the selected stream type some audio and video encoding formats can be unavailable.</p> <ul style="list-style-type: none"> • <i>Elementary</i> — output audio and/or video streams will be saved into separate files without multiplexing. • <i>MPEG-1 System</i> — output streams will be multiplexed into System Stream and will be saved into the single file. • <i>MPEG-2 Program</i> — output streams will be multiplexed into Program Stream and will be saved into the single file. • <i>MPEG-2 Transport</i> — output streams will be multiplexed into Transport Stream and will be saved into single file. • 3GPP - output streams will be multiplexed and saved into the single 3GPP file. • <i>FLV</i> - output streams will be multiplexed and saved into the single FLV (f4v) file. • <i>MP4</i> — output streams will be multiplexed and saved into the single MP4 file. • <i>AVI</i> — output streams will be multiplexed and saved into the single AVI file.
Compatible	<p>Provides compatibility of the created files with different playback devices. Available values depend on the selected stream type. Some encoding parameters can be unavailable or limited to assure receiving file compatibility. For MP4 file are available the following values:</p> <ul style="list-style-type: none"> • <i>ISMA</i> — <i>ISMA</i> compatible file. • <i>Sony PSP</i> — MP4 Sony PSP compatible file. The presence of an audio track is obligatory in this mode. No support for multichannel streams. • <i>Apple iPod</i> — Apple iPod compatible file. No support for multichannel streams.
Number of Pass	<p>Specifies the number of encoding passes.</p> <ul style="list-style-type: none"> • <i>One pass</i> — Fast one-pass mode. In this mode the bitrate varies on-the-fly, starting at the specified bitrate, increasing toward the specified maximum in complex segments and decreasing toward the specified minimum in less complex segments. • <i>Two pass</i> — Qualitative two-pass mode. In this mode the analysis pass is performed before the encoding pass. The analysis pass determines the best variable bitrate for the encoding pass. The actual bitrate varies between the specified minimum and maximum values. The bitrate increase and decrease are balanced to keep the average bitrate to the specified value.
Encode to target file size	<p>Allows encoding a file into the specified size that is selected from the standard sizes list or it is specified by the user. The video bitrate will be automatically adjusted according to the file duration and its target size. The audio track bitrates is set manually and remains unchanged. The "Encode to target file size" mode is available only for 3GPP, FLV, MP4, MPEG-1 SS, MPEG-2 PS or MPEG-2 VES formats.</p>
Output file size	<p>Indicates the estimated output file size. Allows setting the required file size during encoding in the "Encode to target file size" mode.</p>
Description	<p>Allows user to add file description, if the encoded file is Sony PSP compatible.</p>
Indexing output file	<p>Creates the index file after encoding (for VES\TS\PS only).</p>
Convert subpictures to DVB stream	<p>Allows conversion of DVD subtitles to DVB subtitles. The option is available only for multiplexing into TS format. Otherwise the encoded video can be overlaid with one selected subtitle track.</p>
Encrypt Transport Stream	<p>Allows encryption of Transport Stream.</p>

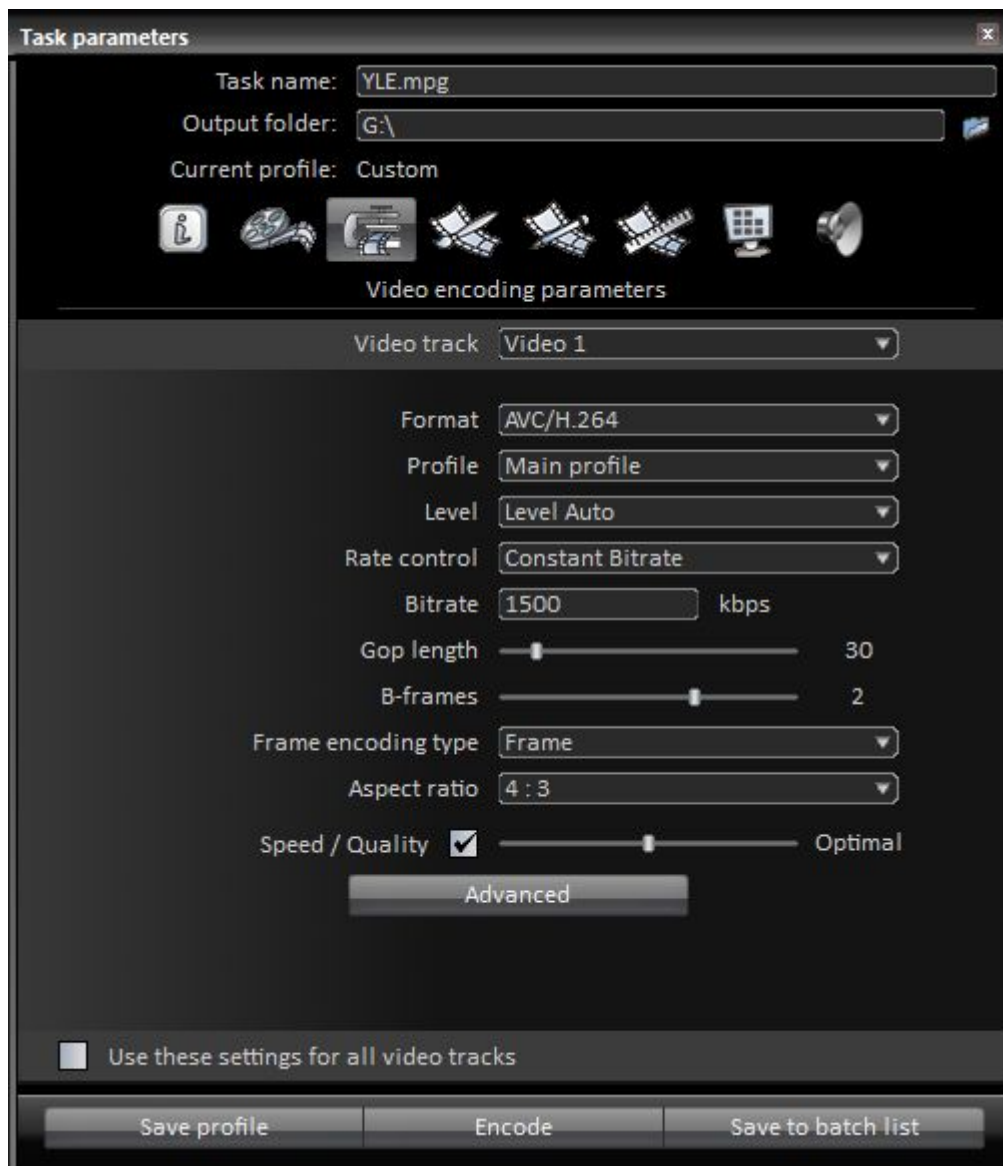
5.6 Video Encoding Parameters



Click  to open the **Video Encoding Parameters** group. It allows adjusting general settings for video encoders. By selecting a track from the video list (if there is a list of tracks), you can apply individual settings for every track.


Select the **Use these settings for all video tracks** check box if the open file has several video tracks, and it is necessary to adjust the same settings for every track. So, select a first video track, set all necessary parameters for it and select this check box. Then save the task.

Figure 34. Task Parameters – Video Encoding Parameters



The following table describes **Video Encoding Parameters** controls.

Table 7. Task Parameters – Video Encoding Parameters Controls

Control	Description
Encoding Format	<p>Specifies the video encoding format. The list of available video formats is formed according to the selected stream type. There are individual settings for some formats. Click  the Advanced button to open them.</p> <ul style="list-style-type: none"> • MPEG-1 – MPEG-1 video • MPEG-2 – MPEG-2 video • MPEG-4 – MPEG-4 ASP video • AVC/H.264 – AVC/H.264 video • DV – DV25 video • AVI Uncompressed – uncompressed video • AVI HuffYUV – lossless encoded video (the appropriate encoder must be installed in the system)
Profile and Level	<p>Specifies the profile and level for the video output format. Profile and level impose restrictions on video encoding parameters in order to guarantee compatibility with hardware devices. Some settings can be unavailable in this case.</p> <p>For MPEG-2 video format the following profiles and levels are available:</p> <ul style="list-style-type: none"> • Simple Profile/Main Level • Main Profile/Simple Level • Main Profile/Main Level • Main Profile/High1440 Level • Main Profile/High Level • High Profile/Main Level • High Profile/High1440 Level • High Profile/High Level • 422 Profile/Main Level • 422 Profile/High Level • 422 Profile/Unspecified Level <p>For MPEG-4 ASP video format the following profiles and levels are available:</p> <ul style="list-style-type: none"> • Simple profile/Level 5 • Advanced simple profile/Level 5 <p>For AVC/H.264 video format the following profiles and levels are available:</p> <ul style="list-style-type: none"> • Baseline profile/Level 5.1 • Main profile/Level 5.1 • High profile/Level 5.1 • High422 profile/Level 5.1
Rate Control	<p>Specifies the Rate Control mode. The following modes are available:</p> <ul style="list-style-type: none"> • Variable Bitrate. The number of transmitted bits per unit time may vary for the stream. • Constant Bitrate .The number of transmitted bits per unit time is constant for the stream. • Constant Quantizer. The stream rate is not controlled as fixed quantizers are set for every frame.
Bitrate	<p>Specifies the video bitrate. The range of available bitrates exists for each encoding format. Stream rate can be limited in some cases to assure file compatibility with different hardware.</p>
GOP Length	<p>Specifies the maximum number of pictures in GOP (Group Of Pictures). Larger GOPs provide better compression while smaller GOPs provide faster access by positioning. Set the distance between reference frames no more than 12-15 to receive files compatibility with hardware devices.</p> <p>For MPEG-2 video format the following values are available:</p> <ul style="list-style-type: none"> • 0 - 100 <p>For MPEG-4 and AVC/H.264 video format the following values are available:</p> <ul style="list-style-type: none"> • 0 - 300

Control	Description
B-frames	Specifies the maximum number of B-frames which have bidirectional prediction for encoding in GOP. B-frames significantly enhance video encoding quality. Use two B-frames for MPEG-2 and MPEG-4 ASP encoding and three B-frames for H.264 encoding. For MPEG-2, MPEG-4 ASP and AVC/H.264 video formats the following values are available: 0 - 3
Frame Encoding Type	Selects the video frame encoding type. For MPEG-2 video format the following modes are available: <ul style="list-style-type: none"> • Progressive • Interlaced (adaptive) • Interlaced For MPEG-4 ASP video format the following modes are available: <ul style="list-style-type: none"> • Progressive • Interlaced For AVC/H.264 video format the following modes are available: <ul style="list-style-type: none"> • Progressive • Interlaced • MBAFF (adaptive) <p>The Progressive mode is optimized for encoding of video that contains only progressive frames. Use another mode for interlaced video. If interlaced encoding is not acceptable, the interlaced video can be converted into progressive format using the deinterlacing operation.</p> <p>Interlaced video can be encoded using the Interlaced and Interlaced (adaptive) modes. The first one is optimized for video that contains only interlaced frames. Adaptive mode provides the better encoding quality for interlaced and mixed (interlaced and progressive frames) video.</p>
Aspect Ratio	Specifies the output video aspect ratio.
Speed/Quality	Allows the adjustment of the encoding speed/quality ratio. The Fastest mode is adjusted to the maximum encoding speed. And vice versa, the Highest mode provides the maximum quality. The optimal speed/quality ratio is provided with the Optimal mode.

5.7 Picture Transformation




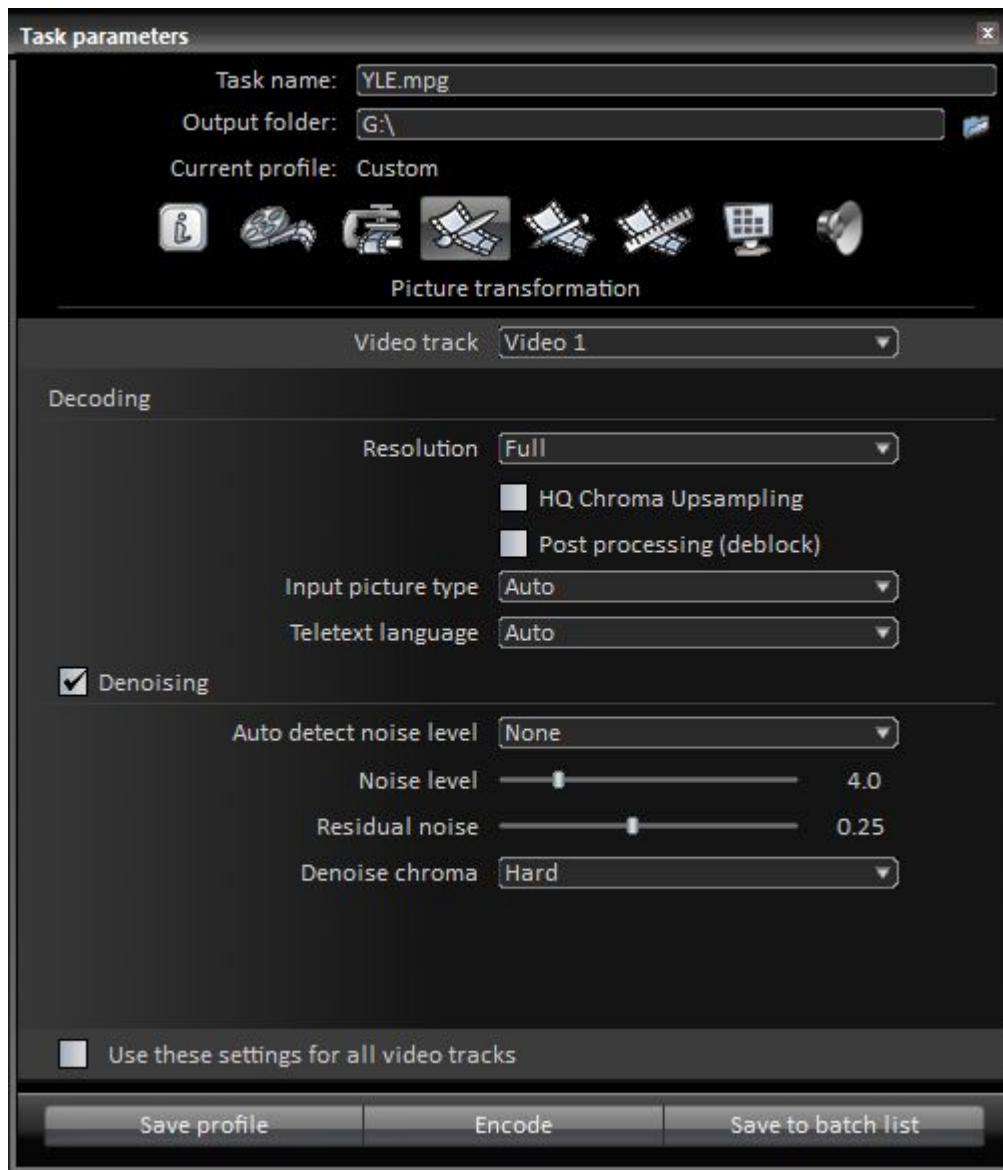
Click one of the transformation  buttons to open the **Picture Transformation** group. It allows using such optional filters as: denoising, color correction, deinterlacing, resizing, frame rate conversion, etc. As in case with **Video Encoder Parameters**, you can also apply individual settings for every track or apply the first track settings to all available tracks in the file.

Figure 35. Task Parameters – Picture Transformation 1



The following table describes **Picture Transformation 1** controls:

Table 8. Task Parameters – Picture Transformation 1 Controls

Control	Description
Resolution	<p>Sets the output resolution mode during decoding:</p> <ul style="list-style-type: none"> <i>Full</i> — Output video has original frame size <i>Half horizontal</i> — Output video frame width is reduced by half <i>Half vertical</i> — Output video frame height is reduced by half <i>Quarter</i> — Output video frame width and height are reduced by half <p>When you select this option, the decoding process can be accelerated but some small artifacts can appear on the picture. This option is available for MPEG-2 and DV video decoding.</p>
HQ Chroma Upsampling	Improves the visual quality of the decoded video by using the better al-

Control	Description
	<p>gorithm of chroma component decoding. It is especially noticeable during decoding video with color blends. It is recommended to use only if video is converted to MPEG-2 4:2:2 or to AVI Uncompressed/HufYUV. See example below.</p>
Postprocessing (deblocking)	<p>Removes the MPEG compression artifacts by using deblocking and deringing filters. For MPEG-4 AVC/H.264 streams this option must be enabled. See example below.</p>
Input picture type	<p>According to the picture type all filters will be set for picture transformation in order to provide maximum quality of the output stream. You can select a picture type:</p> <ul style="list-style-type: none"> • <i>Auto</i> — Automatically defines a picture type • <i>Progressive</i> — A picture type is set into progressive mode • <i>Interlaced</i> — A picture type is set into interlaced mode. All frames will be processed by fields
Teletext language	<p>Allows selection of the teletext language for overlay during the transcoding process.</p>
Denoising	<p>Allows visual improvement of the picture by reducing high-frequency noise. The denoising filter operates both in software and hardware mode on video adapters supporting NVIDIA CUDA technology. Concurrent utilization of several video cards makes it possible to boost the processing speed up to 33 times as compared to standard CPU performance.</p>
Auto detect noise level	<p>Enables the automatic noise level detection. This option provides more effective work of the denoising filter.</p>
Noise level	<p>Specifies the noise level value, if the automatic noise detection is disabled. The 2 value corresponds to the insignificant noise level, the 7 value corresponds to the heavy noise. The optimal values – from 3 to 5.</p>
Residual noise	<p>Specifies the allowable residual noise level after the denoising process. The lower residual noise level the higher denoising effect and lower processing speed. The optimal values – from 0.2 to 0.4.</p>
Denoise chroma	<p>Allows both luma and chroma component denoising. This option provides more effective work of the denoising filter.</p>

Figure 36. Picture Transformation – HQ Upsampling



Figure 37. Picture Transformation – Postprocessing (Deblocking)

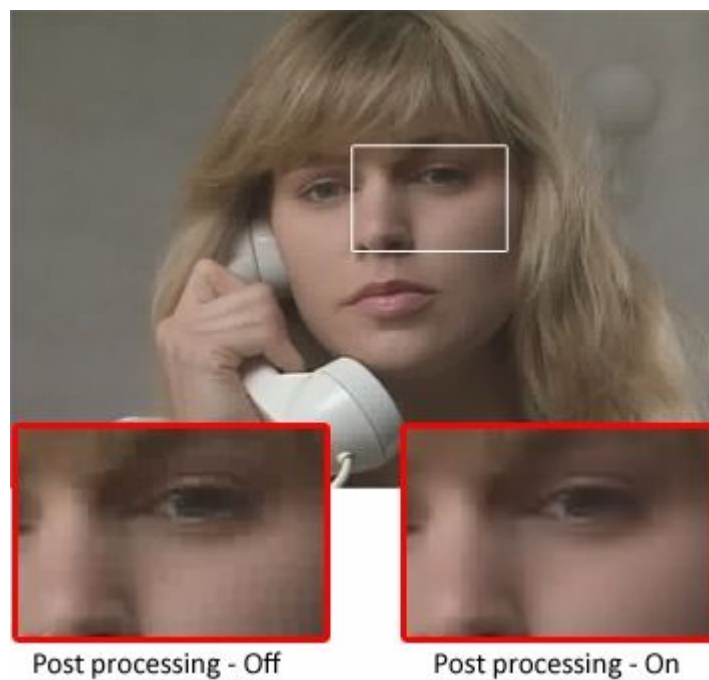
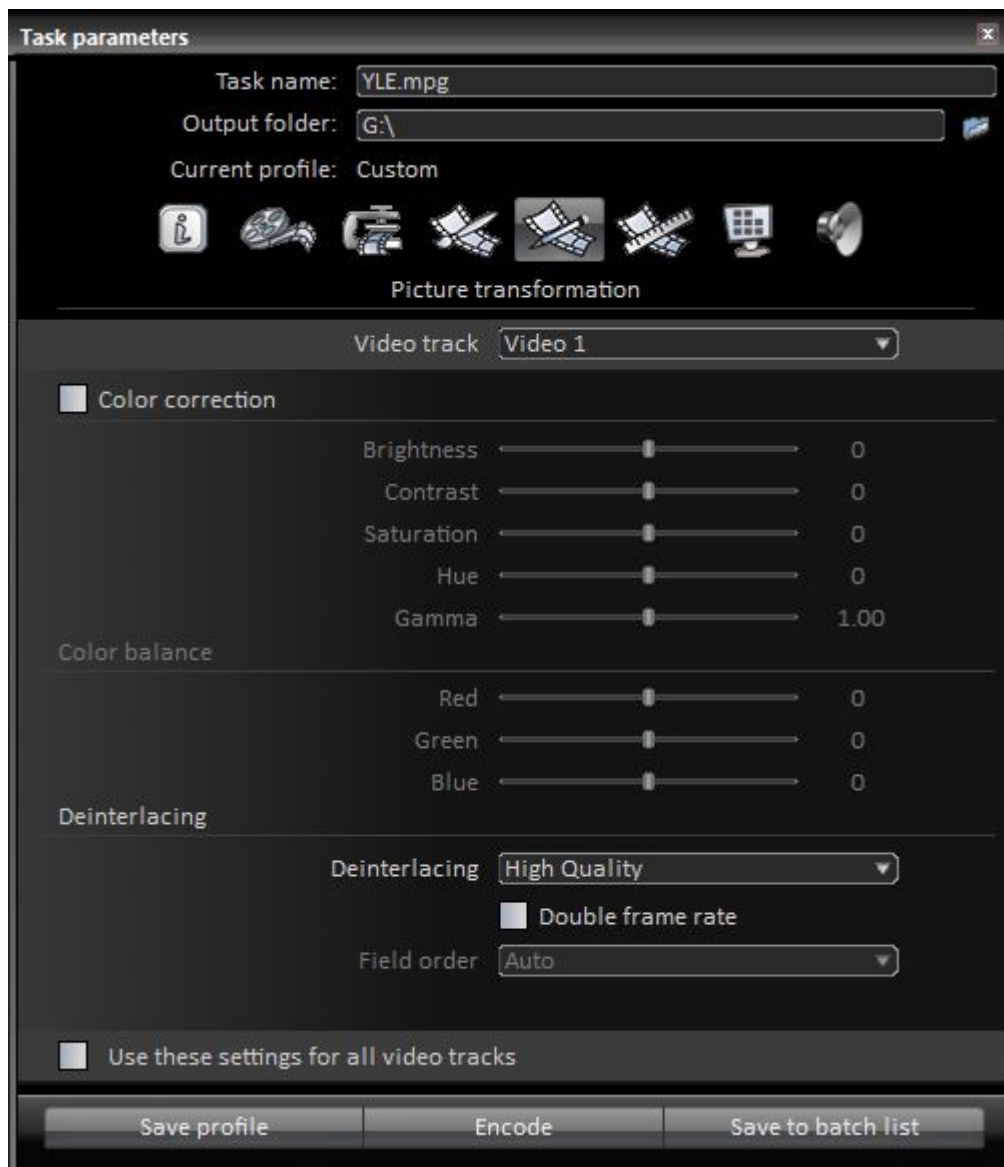


Figure 38. Picture Transformation – Denoising



Figure 39. Task Parameters – Picture Transformation 2



The following table describes **Picture Transformation 2** controls.

Table 9. Task Parameters – Picture Transformation 2 Controls

Control	Description
Color correction	Enables adjustment of the following video characteristics: brightness, contrast, saturation, hue, gamma.
Deinterlacing	Allows converting interlaced video into progressive. Two deinterlacing modes are available: <ul style="list-style-type: none"> • <i>High Speed</i> — Uses the fast bicubic method. Deinterlacing does not affect conversion speed. • <i>High Quality</i> — Uses the more qualitative adaptive method, but deinterlacing speed is lower. See examples below.
Double frame rate	Allows conversion of interlaced video into progressive format using the frame rate doubling.
Field order	Allows user to specify the field order in the input video.

Figure 40. Picture Transformation – Deinterlacing

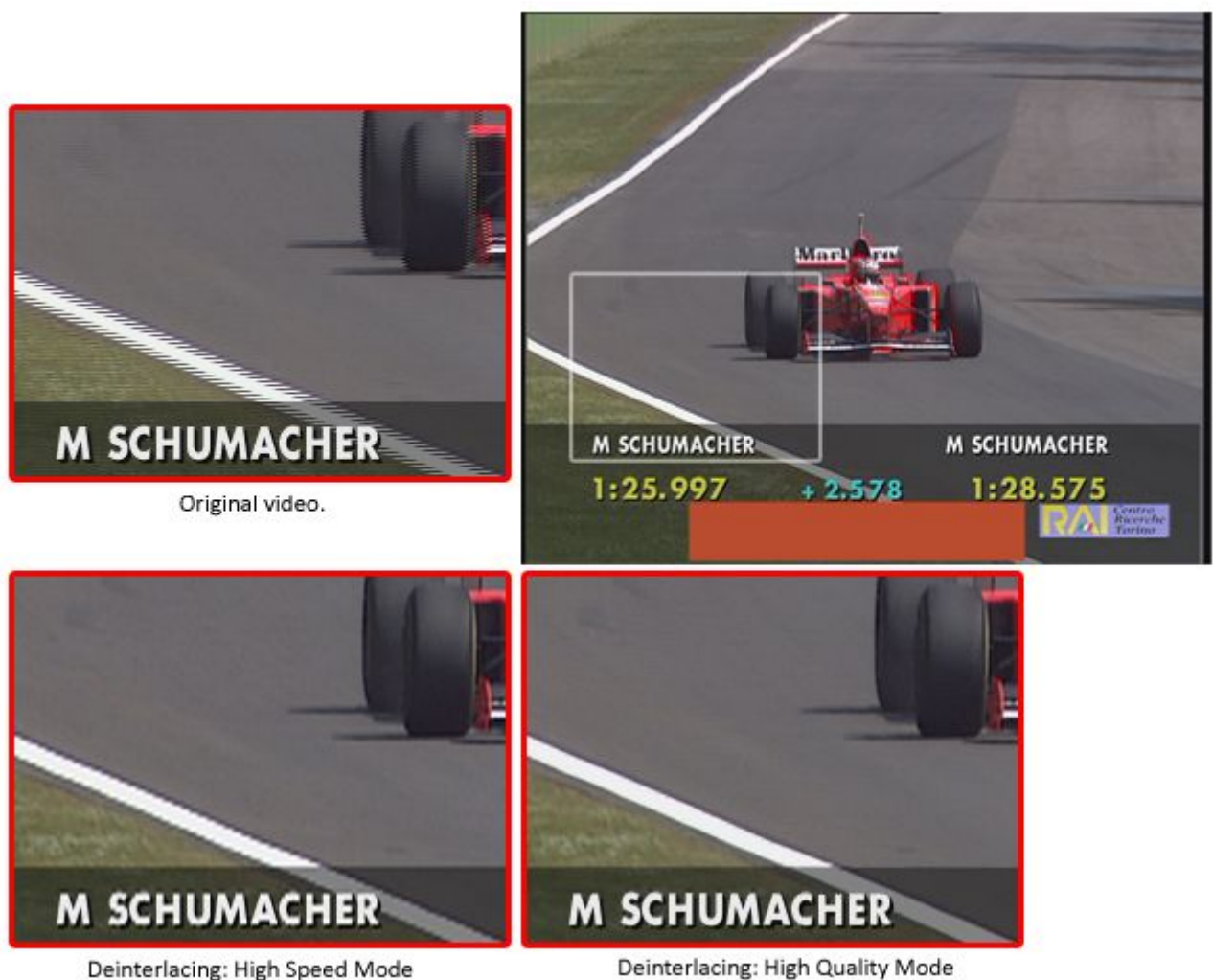


Figure 41. Task Parameters – Picture Transformation 2

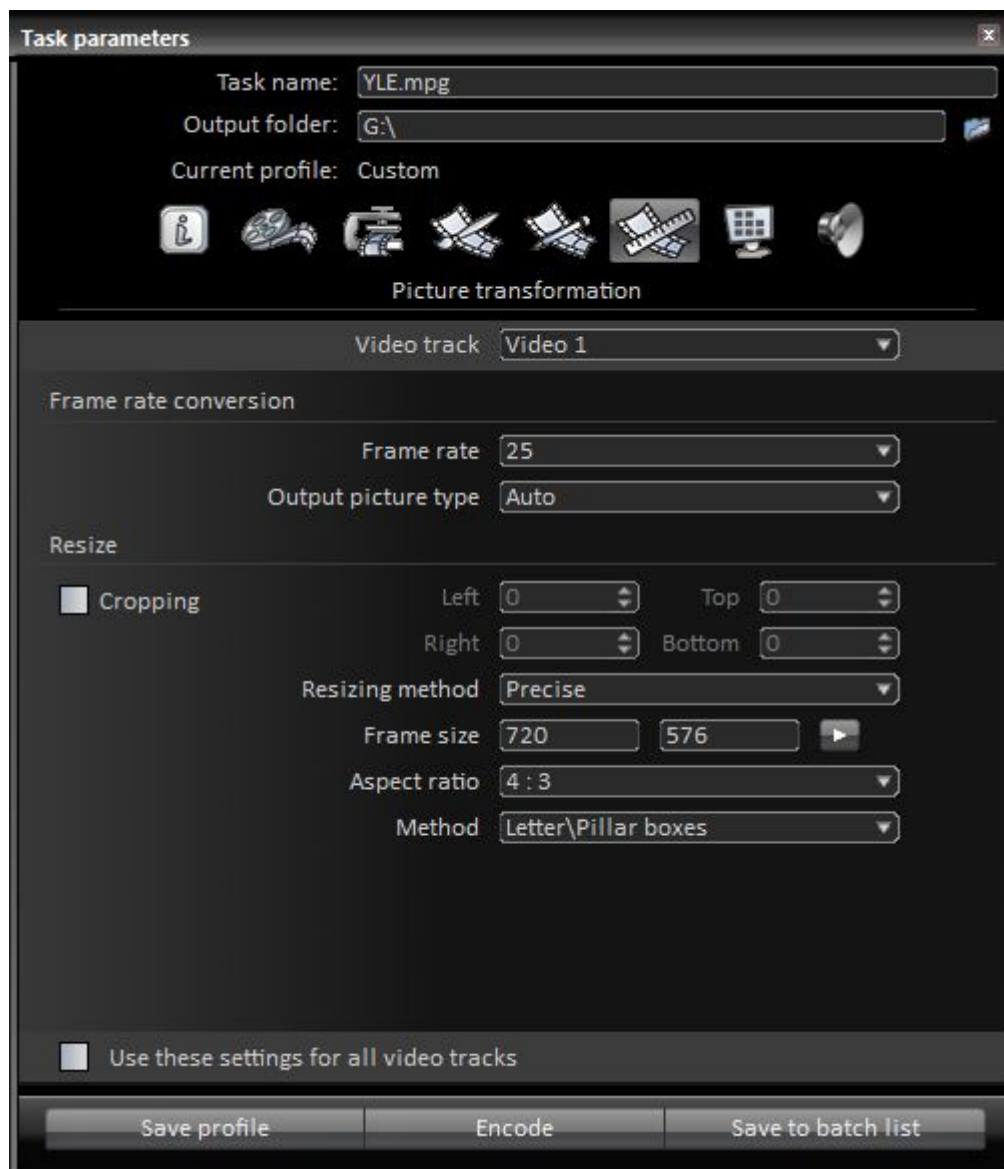


Table 10. Task Parameters – Picture Transformation 3 Controls

Control	Description
Frame rate	Allows frame rate changing. The necessary frames will be added or removed to/from the video stream.
Output picture type	Allows user to set type of the output frame, if the frame rate is changed.
Cropping	Allows cropping a frame from any side. Values must be set to the appropriate fields in pixels.
Resizing Method	Enables the filter and select the frame resizing method. Each method provides different speed and quality. Some methods provide well-defined edges or fuzzy edges.
Frame Size	Sets the output frame size. You can select the current frame size from the list of presets or set arbitrary values.

Control	Description																																			
	<table border="1"> <tr><td data-bbox="798 257 845 974" rowspan="16">Elecard Converter Studio</td><td data-bbox="845 257 1085 302">QCIF1</td><td data-bbox="1085 257 1225 302">128x96</td></tr> <tr><td data-bbox="845 302 1085 347">QCIF2</td><td data-bbox="1085 302 1225 347">176x144</td></tr> <tr><td data-bbox="845 347 1085 392">CIF</td><td data-bbox="1085 347 1225 392">320x240</td></tr> <tr><td data-bbox="845 392 1085 436">CIF NTSC</td><td data-bbox="1085 392 1225 436">352x240</td></tr> <tr><td data-bbox="845 436 1085 481">CIF PAL</td><td data-bbox="1085 436 1225 481">352x288</td></tr> <tr><td data-bbox="845 481 1085 526">Half D1 NTSC</td><td data-bbox="1085 481 1225 526">352x480</td></tr> <tr><td data-bbox="845 526 1085 571">Half D1 PAL</td><td data-bbox="1085 526 1225 571">352x576</td></tr> <tr><td data-bbox="845 571 1085 616">SVCD NTSC</td><td data-bbox="1085 571 1225 616">480x480</td></tr> <tr><td data-bbox="845 616 1085 660">SVCD PAL</td><td data-bbox="1085 616 1225 660">480x576</td></tr> <tr><td data-bbox="845 660 1085 705">VGA</td><td data-bbox="1085 660 1225 705">640x480</td></tr> <tr><td data-bbox="845 705 1085 750">4CIF NTSC</td><td data-bbox="1085 705 1225 750">704x480</td></tr> <tr><td data-bbox="845 750 1085 795">4CIF PAL</td><td data-bbox="1085 750 1225 795">704x576</td></tr> <tr><td data-bbox="845 795 1085 840">D1 NTSC</td><td data-bbox="1085 795 1225 840">720x480</td></tr> <tr><td data-bbox="845 840 1085 884">D1 PAL</td><td data-bbox="1085 840 1225 884">720x576</td></tr> <tr><td data-bbox="845 884 1085 929">HDV1 720p</td><td data-bbox="1085 884 1225 929">1280x720</td></tr> <tr><td data-bbox="845 929 1085 974">HDV2 1080i</td><td data-bbox="1085 929 1225 974">1440x1080</td></tr> <tr><td data-bbox="845 974 1085 1019">HD 1080p</td><td data-bbox="1085 974 1225 1019">1920x1080</td></tr> </table>	Elecard Converter Studio	QCIF1	128x96	QCIF2	176x144	CIF	320x240	CIF NTSC	352x240	CIF PAL	352x288	Half D1 NTSC	352x480	Half D1 PAL	352x576	SVCD NTSC	480x480	SVCD PAL	480x576	VGA	640x480	4CIF NTSC	704x480	4CIF PAL	704x576	D1 NTSC	720x480	D1 PAL	720x576	HDV1 720p	1280x720	HDV2 1080i	1440x1080	HD 1080p	1920x1080
Elecard Converter Studio	QCIF1		128x96																																	
	QCIF2		176x144																																	
	CIF		320x240																																	
	CIF NTSC		352x240																																	
	CIF PAL		352x288																																	
	Half D1 NTSC		352x480																																	
	Half D1 PAL		352x576																																	
	SVCD NTSC		480x480																																	
	SVCD PAL		480x576																																	
	VGA		640x480																																	
	4CIF NTSC		704x480																																	
	4CIF PAL		704x576																																	
	D1 NTSC		720x480																																	
	D1 PAL		720x576																																	
	HDV1 720p		1280x720																																	
	HDV2 1080i	1440x1080																																		
HD 1080p	1920x1080																																			
Aspect Ratio/Method	Controls aspect ratio change when video frame is resized.																																			

5.8 Logo and Advertisement Insertion




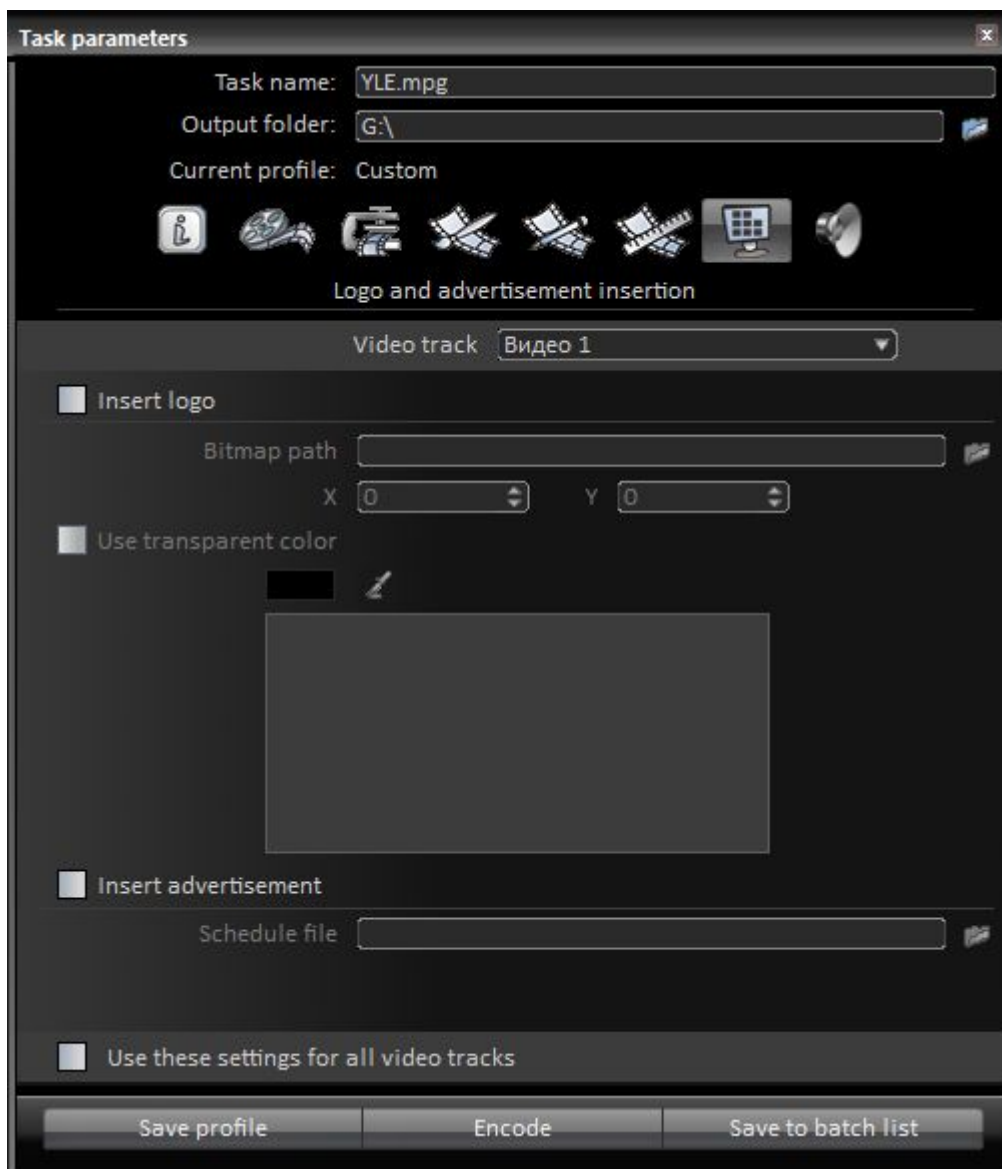

Click  button to open the **Logo and advertisement insertion** group of parameters. These parameters allow logo insertion and advertisement addition to the beginning or to the end of the file during conversion. To insert logo into the video, select the required video track and select the **Insert logo** check box. Then click  and select BMP file in the open window. To insert an advertisement, select the **Insert advertisement** check box, click  and then select the schedule file in the open window. For creating and editing the advertisement schedule file see Section “Advertisement Schedule Editor”.

Figure 42. Task Parameters – Logo and Advertisement Insertion



The following table describes **Logo and advertisement insertion** controls.

Table 11. Task Parameters – Logo and Advertisement Insertion Controls

Control	Description
Bitmap Path	Specifies the path of BMP file that is used as the overlaid logo.
X/Y	Sets the logo position in the picture.
Use Transparent Color	If BMP file with logo has not alpha channel, then transparent color can be set. Click  button, put «eyedropper» on the required logo area, and click the left mouse button.
Schedule file	Specifies the path of the advertisement schedule file.

Note: Only 24-bit and 32-bit BMP files are supported. Transparent color should not be set for 32-bit BMP files with alpha channel.

5.9 Audio Parameters


Click  button to open the **Audio Parameters** group of parameters. It allows the user to select encoding format, to change settings and to set audio frequency and level. When one audio track from the available tracks list is selected, you can set individual settings for it or apply the first track settings to all presented audio tracks in the file.

Figure 43. Task Parameters – Audio Parameters



The following table describes **Audio Parameters** controls.

Table 12. Task Parameters – Audio Parameters Controls

Control	Description
Encoding Format	Specifies the output audio format. The list of available audio formats is formed according to the selected stream type: <ul style="list-style-type: none"> MPEG-1 — format that is used in DVD and SVCD standards and for

Control	Description
	DVB broadcasting. <ul style="list-style-type: none"> • MPEG-2 — format that is optimized for low bitrate audio streams. • AAC — format with stronger compression abilities and better quality than the MPEG format. • WAV — uncompressed audio data in WAV file. • Stream copy — mode of the original track copying from the input file to the output file without conversion.
Channel Mode	Selects the encoding mode for stereo channels if the MPEG-1/2 encoder is selected: <ul style="list-style-type: none"> • Mono — the left and right channels are mixed and encoded as mono. • Joint stereo — Joint stereo is a special stereo format for MPEG-1 Layer II audio. In this mode the information about sound volume difference among channels is coded as balance signal. Encoding quality is some better than in stereo mode. • Stereo — Encoding in common stereo mode.
AAC profile	Selects the profile for AAC audio encoder. AAC profile restricts bitrate and the number of encoded channels. <ul style="list-style-type: none"> • AAC LC — Bitrate is limited by 320 Kbps level. • HE AAC — encoding mode that is more effective than AAC LC.
Number of Channels	Allows user to select the number of audio channels to be encoded into output stream, when Dolby Digital audio is decoded.
Stereo downmix mode	Specifies the downmix mode of Dolby Digital 5.1 stream to stereo format.
Bitrate	Specifies the audio stream bitrate. The range of available bitrates exists for each format. Bitrate can be limited to assure file compatibility with different hardware.
Resampling Frequency	Allows output audio resampling. The selection of the output frequency from the frequencies list is available.
Level Correction	Allows correcting of audio signal level to remove waveform envelope distortions of the input audio data. The following parameters must be set: <ul style="list-style-type: none"> • Level – sets the required level of output signal (dB). • Gate – sets the noise threshold (dB). All sounds with level below the threshold are considered as noise. • Attack – sets the response time to the signal level variation (ms). • Separate channels processing – enables independent processing of each channel.

5.10 Chapter Points

This feature allows adding key frames to the specified positions during encoding. For MPEG format it is possible to playback a file only from I-frame (key frame). Therefore, in some cases a key frame presence in encoded stream is required. The key frames insertion is supported only for MPEG-2 encoding.


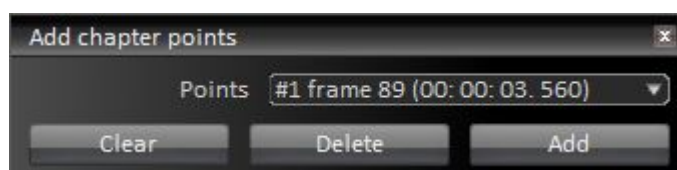
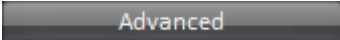
To add a chapter point select the required frame in the **Preview** window and click the  button or press the STAR key (*) on the numeric keypad. The **Add Chapter Points** window appears.

Figure 44. Task Parameters – Add Chapter Points



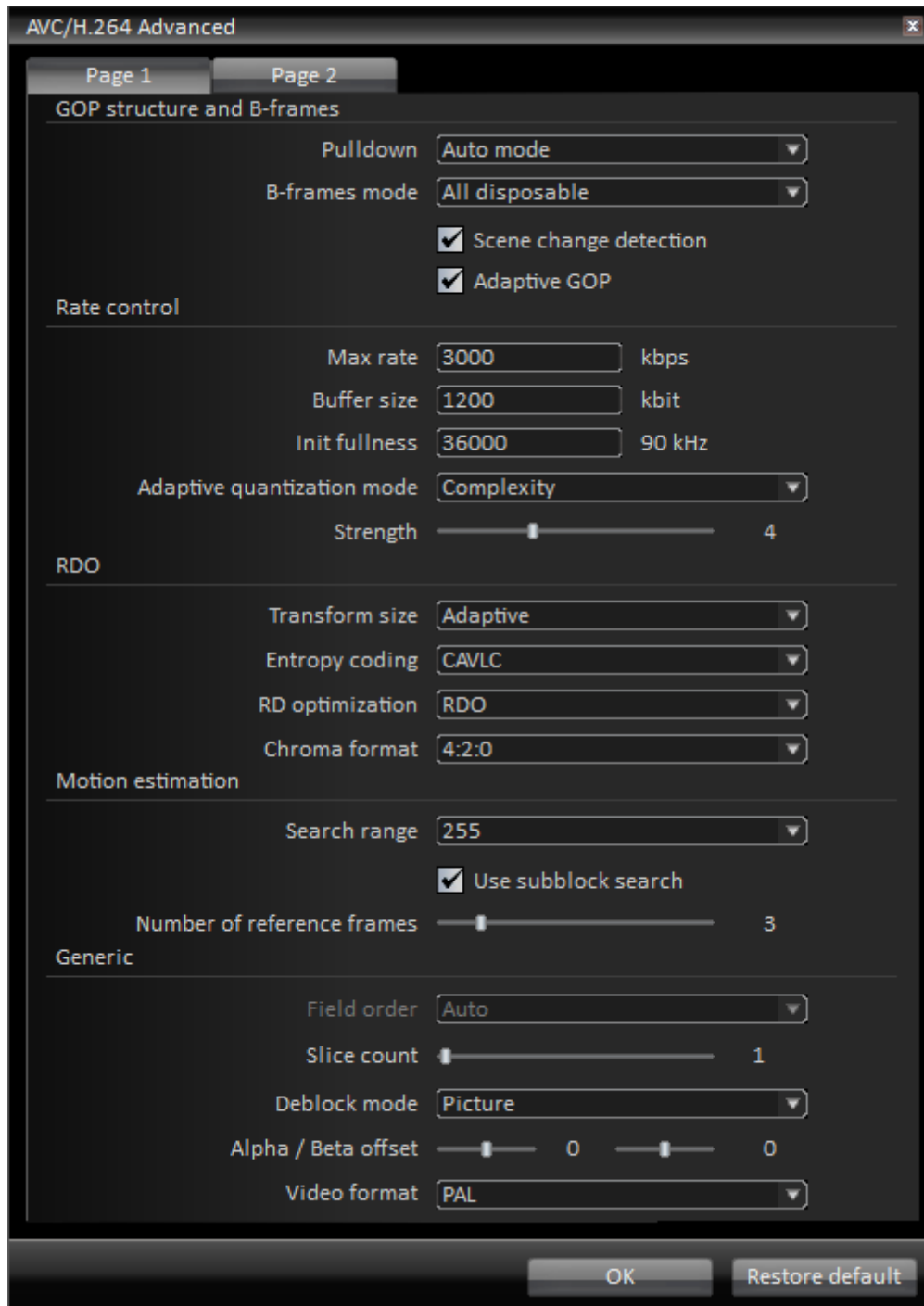
Click **Add** or **Delete** to insert or remove a chapter point. The **Clear** button allows clearing the whole list of added points. When chapter point is selected from the list, the corresponding frame is displayed in the **Preview** window.

6. Advanced Encoding Settings

The following section describes the advanced settings of encoders and MPEG multiplexer. Click  the **Advanced** button to open these settings. If you do not understand the options that are described below, we urge you not to change them and rather use the preconfigured profiles.

6.1 AVC/H.264 Video Encoder Advanced Settings

Figure 45. AVC/H.264 Video Encoder Advanced Settings – Page 1



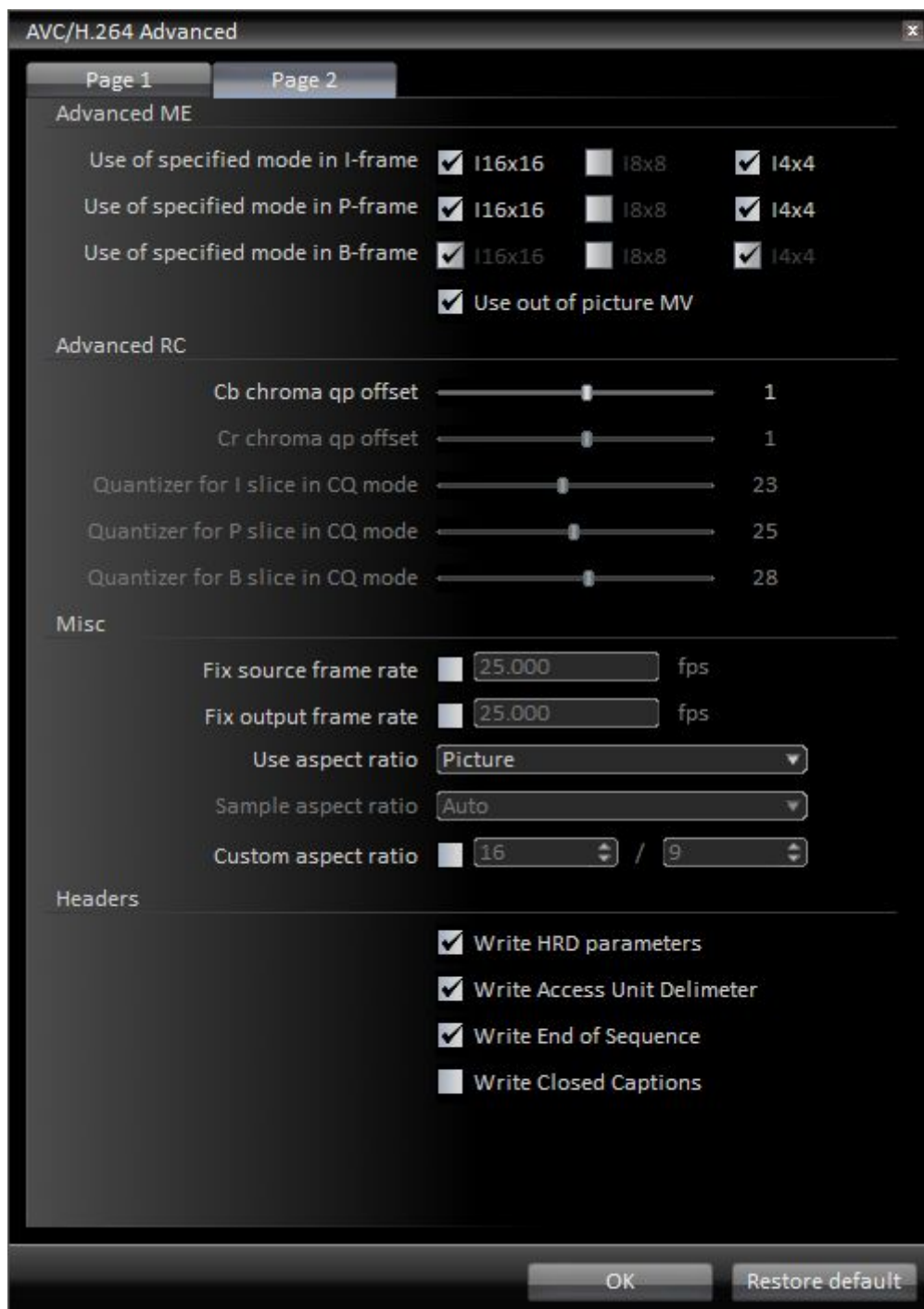
The following table describes the first page of **AVC/H.264 Video Encoder Advanced Settings** controls.

Table 13. AVC/H.264 Video Encoder Advanced Settings – Page 1

Control	Description
Pulldown	<p>Allows converting of video from 23.976 4 fps to 29.97 fps or 23.976 4 to 59.94 fps. The conversion is performed by adding special headers to the stream. Therefore the number of frames is not changed in the stream.</p> <ul style="list-style-type: none"> No pulldown – Encoder ignores the presented pulldown headers and forms new timestamps for every frame. Auto mode – Encoder saves the information about pulldown headers presence/absence in the input stream. 3:2i/2:3i – mode «i» composes the stream by fields «duplication». It is designed for conversion of 24 into 30 fps. 3:2p/2:3p – mode «p» composes the stream by frames «duplication». It is designed for conversion of 24 into 60 fps. <p>To convert 23.976 fps to 29.97 fps, select 3:2i pulldown and set fixed frame rate to 29.97 fps. To convert 23.976 fps to 59.94 fps, select 3:2p pulldown and set fixed frame rate to 59.94 fps.</p>
B-frames mode	<p>Sets the B-frames encoding mode:</p> <ul style="list-style-type: none"> All disposable – B-frames do not contain information needed for another frames decoding. All reference - B-frames contain information needed for another frames decoding. It provides higher quality of compressed video. Hierarchical - allows encoder to use hierarchical structure of B-frames encoding. It increases quality of compressed video. The B-frames number must be set to 3. <p>Recommended only for progressive video encoding.</p>
Scene Change Detection	<p>Enables the automatic insertion of I-frames (reference frames), when new scenes are detected. If this option is enabled, the encoded stream quality and positioning precision are improved. Some options will be inaccessible if the scene change detection mode (SCD) is disabled. Recommended for permanent use.</p>
Adaptive GOP	<p>Enables/disables adaptive B-frames placement. When video complexity is very high, the encoder decreases B-frames count to increase encoding quality. Recommended for permanent use.</p>
Max rate	<p>Specifies the hypothetical rate of the encoded data streaming. It is recommended to set high bitrate value (2-3 times greater than average stream bitrate). Is relevant only to the variable bitrate (VBR) mode.</p>
Buffer size	<p>Specifies the video buffer size.</p>
Init Fullness	<p>Specifies the initial CPB removal delay. Recommended value is 67500 (90000 clock units per 1 second).</p>
Adaptive quantization mode	<p>Selects the adaptive quantization mode. The adaptive block quantization improves visual video quality. Macroblocks will have different quantizers according to the selected algorithm. The following modes are available:</p> <ul style="list-style-type: none"> Do not use – Adaptive quantization is not used Complexity – Is based on macroblock complexity analysis Complexity and Luminance – Is based on macroblock complexity and luminance analysis
Strength	<p>Specifies the variation range of quantizers.</p>
Transform size	<p>Selects dimension of DCT transformation. Sometimes higher DCT dimension provides better macroblock encoding and higher compression (for example for HD video with massive details). The automatic selection is recommended.</p>
Entropy coding	<p>Selects entropy (lossless) compression methods:</p> <ul style="list-style-type: none"> CAVLC – basic compression method of video stream CABAC – more effective (about 15-20%) but needs more CPU resources when encoding and decoding <p>The CABAC method is recommended.</p>

Control	Description
RD optimization	Selects the model of resource optimization for more effective compression: <ul style="list-style-type: none"> • SAD – quick (is based on sum of absolute differences). • SATD – slightly slow (is based on sum of absolute transformed differences). • RDO - high-quality and high-effective model of resource optimization (rate-distortion optimization).
Chroma format	Selects the chroma format for video encoding: <ul style="list-style-type: none"> • Monochrome – video encoding without chroma component. • 4:2:0 – chroma format with half horizontal and vertical color resolutions. The most commonly used and set as default chroma format (including the Blu-ray Disc format). • 4:2:2 – chroma format allowable only in High Profile 422.
Search range	Specifies the maximum motion vector length when searching for blocks shift in the previous/next frames. The value 255 is recommended for SD and 511 – for HD.
Use subblock search	Specifies whether to use sub-block (block size less than 16x16) search in motion estimation or not. The sub-block search extends the accuracy of motion prediction. Recommended for use.
Number of reference frames	Sets the number of reference frames that are used by searching blocks shifts. The recommended value is 3 or 4.
Field order	Specifies the order of fields in the encoded video stream.
Slice count	Specifies the number of independent slices. When this value is set equal to the number of physical (or virtual) CPUs (on multi-CPU computers), the encoding process can be slightly accelerated. Auto mode (value equals 0) is recommended to use.
Deblock mode	Enables deblock postprocessing. It essentially increases visual quality of encoded video (especially for low bitrates). Two modes are supported: <ul style="list-style-type: none"> • Picture – standard deblocking mode. • Slice – is relevant for encoding video into several slices. In this case each slice is processed independently. It increases encoding speed. But quality at the slice boundaries may be decreased.
Alpha offset	Specifies the deblocking strength (how much the defined macroblocks will be softened).
Beta offset	Specifies the deblocking threshold (the strict selection of blocking by filter).
Video format	Allows writing of the video format information into the stream.

Figure 46. AVC/H.264 Video Encoder Advanced Settings – Page 2



The following table describes the second page of **AVC/H.264 Video Encoder Advanced Settings** controls.

Table 14. AVC/H.264 Video Encoder Advanced Settings – Page 2

Control	Description
Use of specified mode in I/P/B frame	Enables/disables use of the spacial prediction modes for I, P, B frames.
Use out of picture MV	Enables/disables use in the motion predicion process of motion vectors over picture boundaries.
Cb/Cr chroma qp offset	Specifies the quantization offset for Cb and Cr chroma components.
Quantizer for I/P/B slice in CQ mode	Spesifies the quantizers for I-frames (reference frames), P-frames (predicted frames) and B-frames (bidirectional predicted frames) in the CQ (Constant Quantizer) mode.
Fix source/output frame rate	Allows fixing the input and output frame rate values (for instance, when the value specified in header is incorrect).
Use Aspect Ratio	Specifies the method of aspect ratio setting. The following methods are available: <ul style="list-style-type: none"> • picture aspect ratio • sample aspect ratio
Sample Aspect Ratio	Sets one of standard aspect ratio or specifies the custom aspect ratio.
Write HRD parameters	Enables/disables the HRD model parameters writing into the encoded stream. The HRD model maintenance is mandatory for the encoded stream compatibility with various devices. And encoder tries to maintain the model, even though the option is disabled.
Write Access Unit Delimiter	Enables/disables the Access Unit delimiters (not obligatory) writing into the encoded stream.
Write End of Sequence	Enables/disables the Sequence End Code writing into the encoded stream.
Write Closed Captions	Enables/disables the Closed Captions keeping (if CC are contained in the input MPEG-2 or AVC/H.264 stream) in the output AVC/H.264 stream.

6.2 AVC/H.264 Hardware Video Encoder Advanced Settings

Figure 47. AVC/H.264 Hardware Video Encoder Advanced Settings

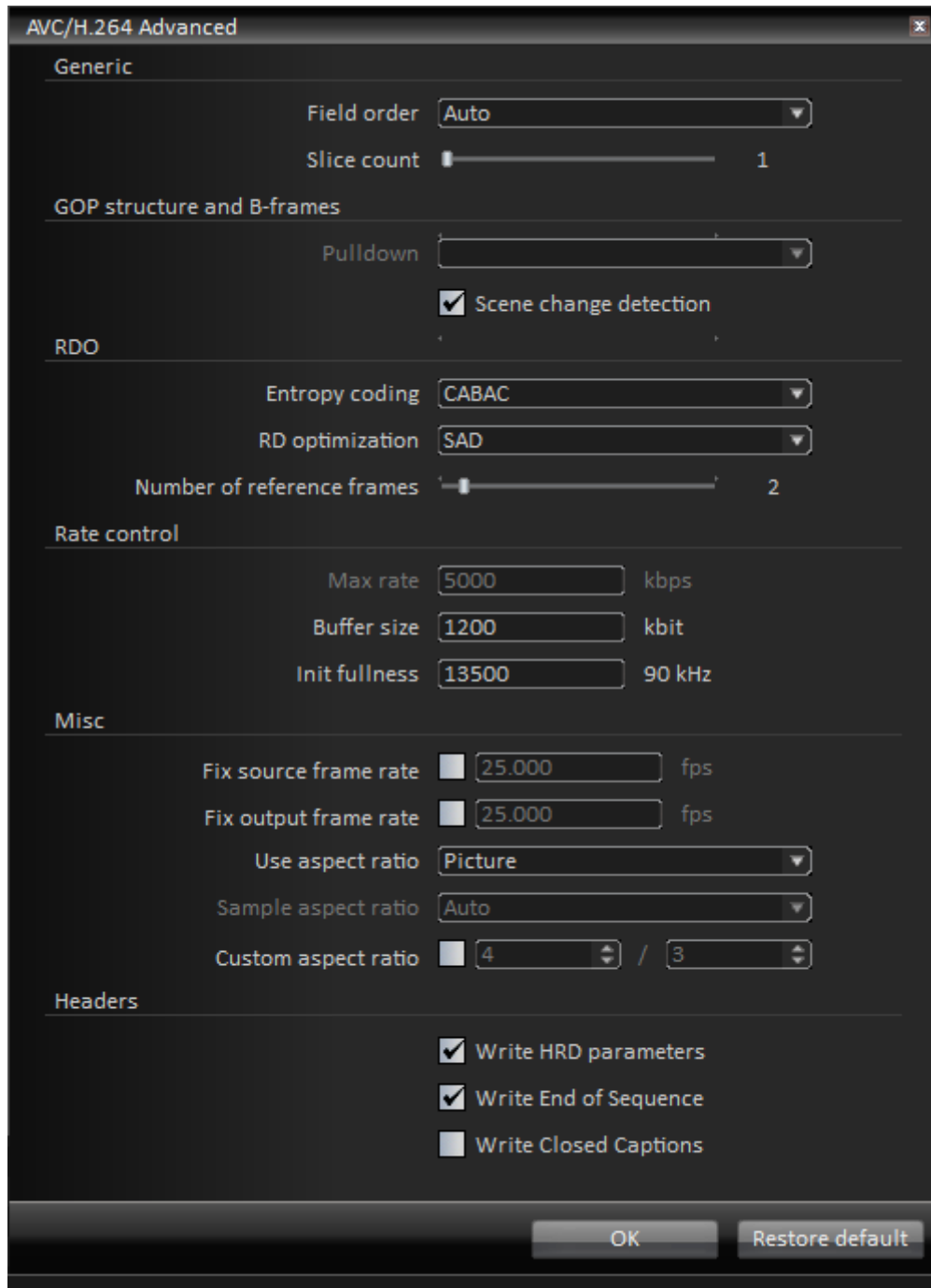


Table 15. AVC/H.264 Hardware Video Encoder Advanced Settings

Control	Description
Field order	Specifies the order of fields in the encoded video stream.
Slice count	Specifies the number of independent slices. When this value is set equal to the number of physical (or virtual) CPUs (on multi-CPU computers), the encoding process can be slightly accelerated. Auto mode (value equals 0) is recommended to use.

Control	Description
Pulldown	<p>Allows converting of video from 23.976 4 fps to 29.97 fps or 23.976 4 to 59.94 fps. The conversion is performed by adding special headers to the stream. Therefore the number of frames is not changed in the stream.</p> <ul style="list-style-type: none"> No pulldown – Encoder ignores the presented pulldown headers and forms new timestamps for every frame. Auto mode – Encoder saves the information about pulldown headers presence/absence in the input stream. 3:2i/2:3i – mode «i» composes the stream by fields «duplication». It is designed for conversion of 24 into 30 fps. 3:2p/2:3p – mode «p» composes the stream by frames «duplication». It is designed for conversion of 24 into 60 fps. <p>To convert 23.976 fps to 29.97 fps, select 3:2i pulldown and set fixed frame rate to 29.97 fps. To convert 23.976 fps to 59.94 fps, select 3:2p pulldown and set fixed frame rate to 59.94 fps.</p>
Scene Change Detection	<p>Enables the automatic insertion of I-frames (reference frames), when new scenes are detected. If this option is enabled, the encoded stream quality and positioning precision are improved. Some options will be inaccessible if the scene change detection mode (SCD) is disabled. Recommended for permanent use.</p>
Entropy coding	<p>Selects entropy (lossless) compression methods:</p> <ul style="list-style-type: none"> CAVLC – basic compression method of video stream CABAC – more effective (about 15-20%) but needs more CPU resources when encoding and decoding <p>The CABAC method is recommended.</p>
RD optimization	<p>Selects the model of resource optimization for more effective compression:</p> <ul style="list-style-type: none"> SAD – quick (is based on sum of absolute differences). RDO - high-quality and high-effective model of resource optimization (rate-distortion optimization).
Number of reference frames	<p>Sets the number of reference frames that are used by searching blocks shifts. The recommended value is 3 or 4.</p>
Max rate	<p>Specifies the hypothetical rate of the encoded data streaming. It is recommended to set high bitrate value (2-3 times greater than average stream bitrate). Is relevant only to the variable bitrate (VBR) mode.</p>
Buffer size	<p>Specifies the video buffer size.</p>
Init Fullness	<p>Specifies the initial CPB removal delay. Recommended value is 67500 (90000 clock units per 1 second).</p>
Fix source/output frame rate	<p>Allows fixing the input and output frame rate values (for instance, when the value specified in header is incorrect).</p>
Use Aspect Ratio	<p>Specifies the method of aspect ratio setting. The following methods are available:</p> <ul style="list-style-type: none"> picture aspect ratio sample aspect ratio
Sample Aspect Ratio	<p>Sets one of standard aspect ratio or specifies the custom aspect ratio.</p>
Write HRD parameters	<p>Enables/disables the HRD model parameters writing into the encoded stream.</p> <p>The HRD model maintenance is mandatory for the encoded stream compatibility with various devices. And encoder tries to maintain the model, even though the option is disabled.</p>
Write Access Unit Delimiter	<p>Enables/disables the Access Unit delimiters (not obligatory) writing into the encoded stream.</p>
Write End of Sequence	<p>Enables/disables the Sequence End Code writing into the encoded stream.</p>
Write Closed Captions	<p>Enables/disables the Closed Captions keeping (if CC are contained in the input MPEG-2 or AVC/H.264 stream) in the output AVC/H.264 stream.</p>

6.3 MPEG-1/2 Video Encoder Advanced Settings

Figure 48. MPEG-1/2 Video Encoder Advanced Settings



The following table describes **MPEG-2 Video Encoder Advanced Settings** controls.

Table 16. MPEG-1/2 Video Encoder Advanced Settings Controls

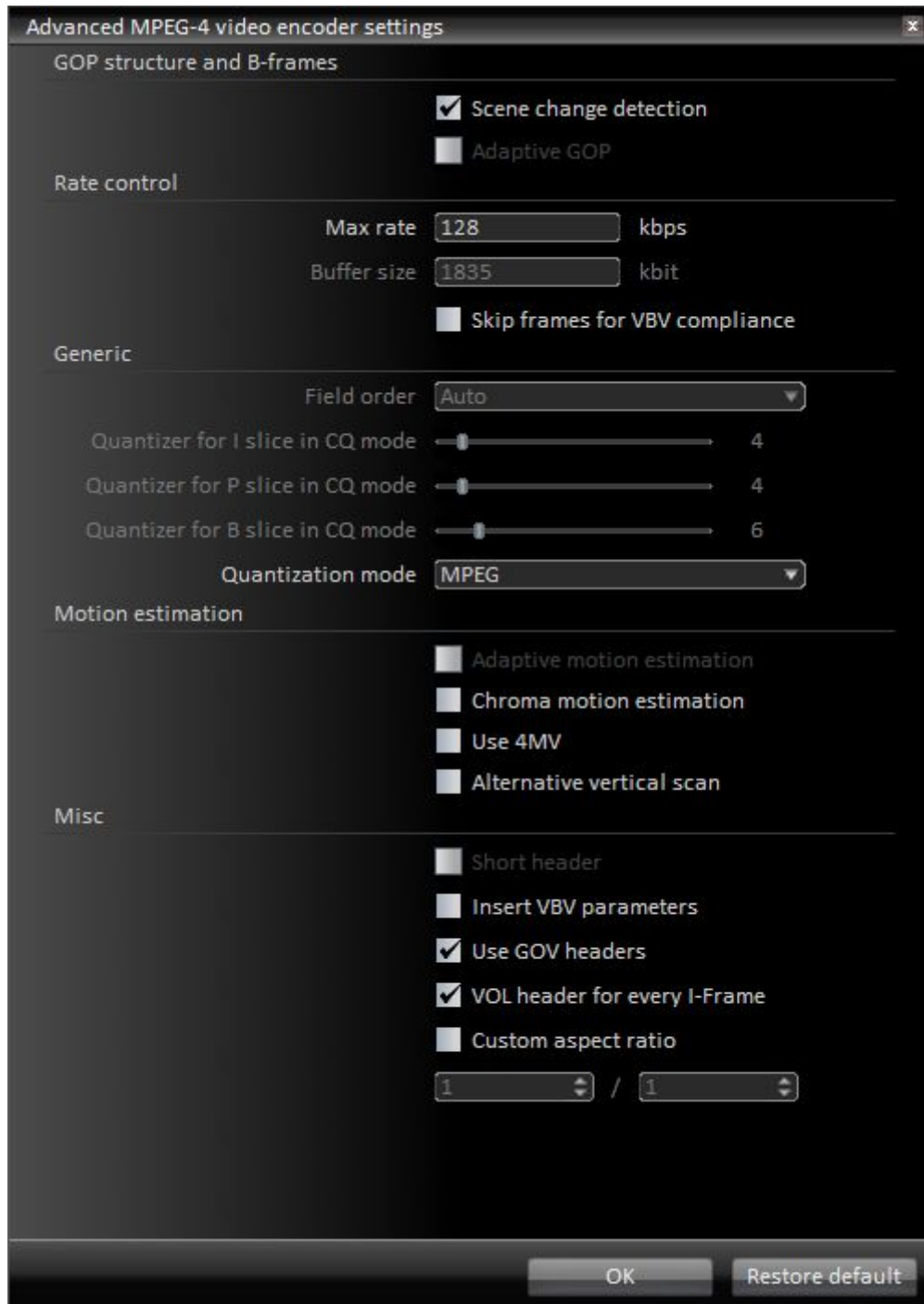
Control	Description
Intra DC Precision	Specifies the effective precision of DC coefficients in intra coded macroblocks.

Control	Description
	<ul style="list-style-type: none"> • <i>8 bits</i> — base value for MPEG-1 video encoding • <i>9/10 bits</i> — it is recommended for MPEG-2 video encoding • <i>11 bits</i> — it is used only for MPEG-2 HL/HP encoding The 10-bits precision is recommended to use.
Chroma Format	Specifies the resolution of chrominance data. <ul style="list-style-type: none"> • <i>4:2:0</i> — Half resolution in both dimensions (the most popular and default for all presets including DVD) • <i>4:2:2</i> — Valid for the MPEG-2 High and 4:2:2 Profiles only
Quantization Type	Specifies the quantization scale type that is used for DCT coefficients quantization: <ul style="list-style-type: none"> • <i>Linear</i> — it is used by default for MPEG-1. • <i>Non-linear</i> — it is used by default for MPEG-2.
Scan Type	Specifies the scan pattern that defines the decoding order of variable length coded DCT coefficients. <ul style="list-style-type: none"> • <i>Alternate scan</i> — it is considered to be better for interlaced video. • <i>Zig-Zag scan</i> — it suits better for progressive video.
Intra VLC	Specifies which of the two variable length coding (VLC) tables is used for the intra coded blocks: <ul style="list-style-type: none"> • <i>Table 0</i> — it is used by default • <i>Table 1</i> — it is optimized for MPEG-2 encoding with 0.3 - 0.6 bit/pixel.
Picture structure	Specifies the picture structure when interlaced video is encoded.
Frame Sequence	Specifies whether the frame sequence in MPEG-2 stream is interlaced or progressive.
Top Field First	Specifies which of the two fields of the interlaced frame comes earlier - the top (odd) field or the bottom (even) one.
Pulldown	Allows converting video with 24 fps to 30 fps. This conversion is performed with special headers that are added to the stream. That is why the number of frames is not changed in the stream.
Frame Rate	Specifies the frame rate of the source file. Must be set before the Pulldown mode activation.
Scene Change Detection	Specifies the scene changing detection (SCD) algorithm. This flag causes the Encoder to insert I-frames when new scenes are detected. If this option is enabled (recommended), the encoded stream quality and positioning precision are improved.
Closed GOP	Enables the closed GOPs usage. If the feature is enabled, every frame is located inside the GOP. It allows correct B-frame decoding during arbitrary access to the stream data. The encoded video quality may become slightly worse.
Adaptive GOP	Enables the adaptive GOP structure. When the video complexity is very high, the encoder decreases number of B-frames to increase the encoding quality. Recommended for permanent use.
VBV Size	Specifies size of VBV buffer. If this parameter is equal to zero, the encoder automatically calculates the required buffer size.
Max rate	Specifies the maximum stream bitrate. It is set only in variable stream rate mode.
GOP header time	Specifies the calculation method for the GOP header timestamps.
Start time	Specifies the first frame time (if timestamp values are calculated from the frame number) or time shift relative to the PTS (if timestamp values are calculated using the frame PTSs).
Closed Caption	Enables the saving of closed caption data while transcoding from MPEG-2 and MPEG-4 AVC/H.264 streams into MPEG-2.
Pad Skipped Frames	Allows the encoder to detect gaps in the frame time stamps and insert the skipped frames (by duplication).
Write sequence_header in Every GOP	Specifies whether the sequence_header is inserted into every GOP or just once at the beginning of the stream. Note that this option must be enabled for VCD, SVCD and DVD encoding.
Write	Specifies whether the sequence_extension should be in every GOP. Some

Control	Description
sequence_extension	devices have problems with playing SVCs that are encoded with sequence extensions.
Write picture_display_extension	Specifies whether the picture_display_extension should be in the video stream.
Write sequence_end_code	Specifies whether the sequence_end_code should be added at the end of the stream.

6.4 MPEG-4 Video Encoder Advanced Settings

Figure 49. MPEG-4 Video Encoder Advanced Settings



The following table describes **MPEG-4 Video Encoder Advanced Settings** controls.

Table 17. MPEG-4 ASP Video Encoder Advanced Settings Controls

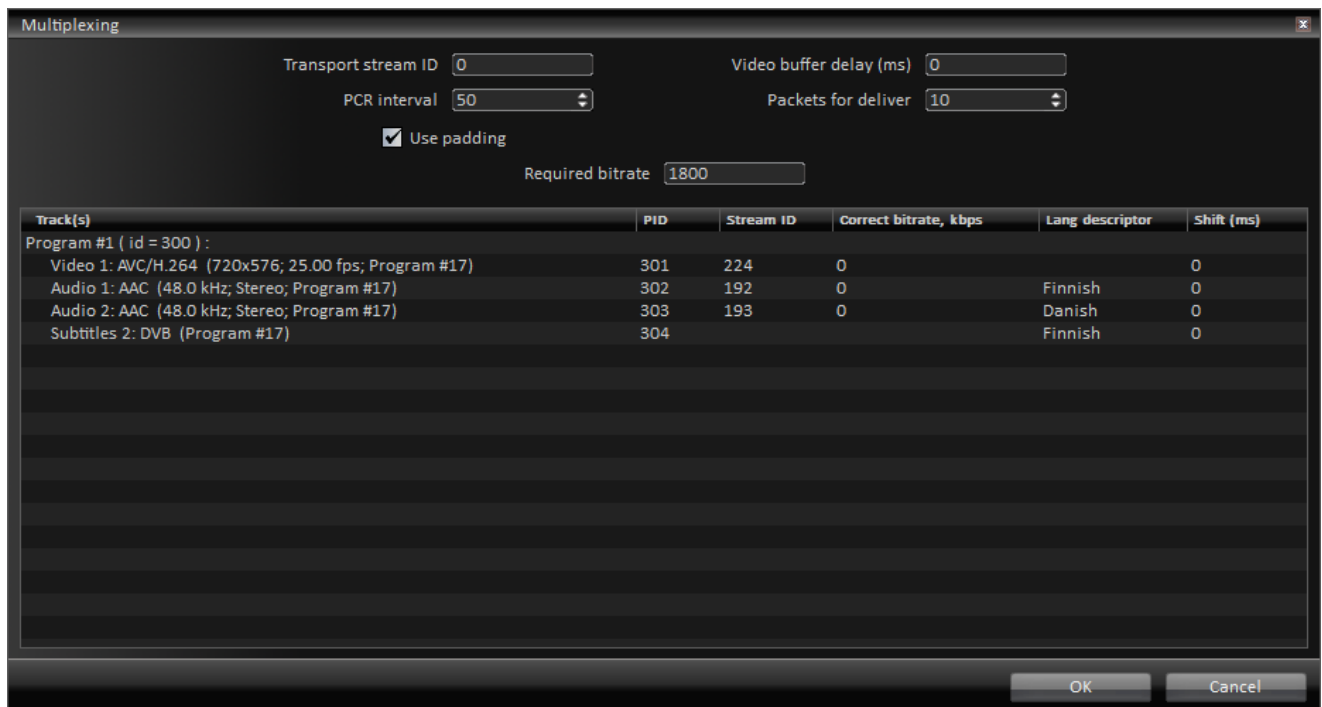
Control	Description
Scene change detection	Enables/disables the scene change detection (SCD) mode. This feature causes the Encoder to insert I-frames when new scenes are detected. If this option is enabled (recommended), the encoded stream quality and positioning precision are improved.
Adaptive GOP	Enables/disables the adaptive GOP structure. When the video complexity is very high, the encoder decreases number of B-frames to increase the encoding quality. Recommended for permanent use.
Max rate	Specifies the maximal stream bitrate. Relevant only to the variable bitrate (VBR) mode.
Buffer size	Specifies the video buffer size. If the value is equal to zero then the encoder automatically calculates the required buffer size.
Skip frames for VBV compliance	Enables the encoder to respect VBV buffer underflow restriction by producing fake frame all block of which are skipped. Reduces quality while maintaining VBV compliance. It is recommended to select this option, when encoded video is intended for playback on particular devices (VBV model maintenance is obligatory) or for network broadcasting (fixed bandwidth).
Field order	Specifies the order of fields in the encoded video stream.
Quantizer for I/P/B slice in CQ mode	Specifies the quantizers for I-frames (reference frames), P-frames (predicted frames) and B-frames (bidirectional predicted frames) in the CQ (Constant Quantizer) mode.
Quantization mode	Specifies the quantization scale type. During compression process the discrete cosine transformation (DCT) is performed on video data. The DCT coefficients are made more coarse using division. The divisor is named quantizer. <ul style="list-style-type: none"> • <i>H263</i> – fixed (constant) quantizer. The same quantizer is used for all coefficients. • <i>MPEG</i> – non-linear quantizer. Higher frequencies (are responsible for fine details) are usually quantized more coarsely (fewer values allowed) than lower frequencies. It provides higher compression, while video quality is degraded insignificantly.
Adaptive motion estimation	Allows the encoder to improve output video quality, when interlaced stream is encoded. The encoder checks which motion estimation mode (frame or field) is more effective for each macro-block. The checking procedure decreases the encoding speed. This option is useful, when quality is more significant than speed. It is recommended to use for encoding of interlaced video with both static (progressive mode provides better result) and dynamic (interlaced mode is more suitable) scenes.
Chroma motion estimation	Enables the encoder to calculate motion vectors using the chromatic components of picture. The more informative chromatic fields allow the more efficient motion estimation. This option is useful, when quality is more significant than speed.
Use 4MV	Enables usage of blocks less than 16x16 in the motion estimation process. It increases the motion prediction accuracy. Recommended for use.
Alternative vertical scan	Enables the encoder to use alternative vertical scan instead of standard zigzag scan. Provides more efficient grouping of video data before DCT and (as a result) improves the quantization efficiency. This option is useful for pictures with significant correlation of vertically aligned components (such as grouped fields of interlaced video). It increases probability of long sequences of equal quantized coefficients and consequently provides better compression. Does not affect the encoding speed. It is recommended to use in interlaced video encoding.
Short header	Provides compatibility of MPEG-4 Visual with the ITU-T H.263 video coding standard. A lot of MPEG-4 specific features (for example, B-frames) will be disabled. Produced video stream will contain the H.263 FOURCC mark. It is recommended to select this option, when encoded video is intended for playback on devices that support only H.263 standard (for example 3gp video for iPod or mobile phones).

Control	Description
Insert VBV parameters	Enables insertion of VBV parameters into the encoded stream. Format of MPEG-4 sequence header allows declaration of the VBV model parameters (VBV buffer size, average bitrate) used in the video encoding process. The parameters declaration is optional.
Use GOV headers	Enables insertion of GOV headers into the encoded stream. MPEG-4 video stream can be divided into Groups Of VOPs (GOV). Every GOV starts with I-frame that optionally contains GOV and VOL headers. GOV header contains the time stamp of group beginning and the group structure information. GOV is named 'open' if it contains B-frames referring to frames from neighbour groups. It is recommended to insert GOV headers into MPEG-4 video intended for further editing.
VOL header for every I-Frame	Enables insertion of VOL headers for every I-frame. The VOL header contains the main parameters of encoded video stream that are needed for successful video decoding. VOL headers repeated in the stream allow the video stream decoding from any position (not only from the beginning). It is recommended to insert VOL headers into MPEG-4 video intended for network broadcasting. It may be needed to turn the option off only when video with very low bitrate and small GOV is encoded (VOL headers before every I-frame waste the low bitrate reserve taking it away from video data).
Custom aspect ratio	Allows the non-standard aspect ratio setting.

6.5 MPEG Multiplexer Advanced Settings

The MPEG multiplexer advanced settings allow the user both to adjust the multiplexing process and to create multiprogram streams.

Figure 50. Multiplexing Advanced Settings



Stream ID, Stream PES ID, Correct bitrate, Language and **Shift** are set separately for every track. Click the required parameter and type the value.

PID	Stream ID	Co
301	224	0
302	192	0

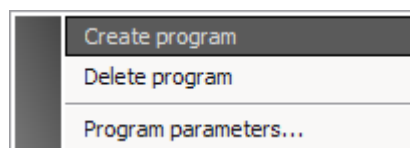
Other parameters are common for the whole stream.

The following table describes controls of the **Multiplexing Advanced Settings** dialog.

Table 18. Multiplexing Advanced Settings Controls

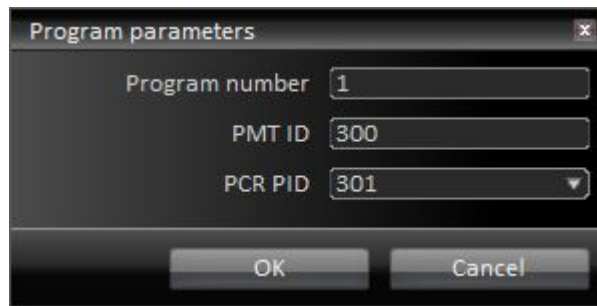
Control	Description
Transport Stream ID	This is a 16-bit field. It identifies the transport stream among other streams over the network. The value is defined by the user (ISO/IEC 13818-1).
PCR Interval	This option is available only for Transport Stream. Allows the user to specify the time distance between two consecutive Program Clock Reference stamps.
Use Padding	Allows the stream expanding with padding packets to provide the specified constant bitrate.
Required Bitrate	Sets the total bitrate of transport stream. If this value is not specified, the stream bitrate is calculated as sum of bitrates of all multiplexed streams.
Stream ID	This is a 13-bit field that indicates the type of the packet payload data.
Stream PES ID	Specifies the type and number of elementary stream in Program Stream. In Transport Stream it may be set to any valid value that correctly describes the elementary stream type (defined in table 2-19 ISO/IEC 13818-1). In Transport Stream elementary stream types are defined in Program Specific Information (page 44 ISO/IEC 13818-1).
Correct Bitrate	This option allows the user to specify the stream real bitrate, if the stream declared bitrate is not correct.
Language	Specifies language of audio or subtitle tracks.
Shift (ms)	Specifies time shift of the track beginning. Is used for elimination of synchronization problems.

For multiprogram stream creation click multiplexing area to open the shortcut menu and select the **Create program** command. By using this menu you can also delete or change the program parameters.



To set **Program number** and **Program id** use the **Program Parameters** window. This window is displayed when the program parameters are created or changed.

Figure 51. Program Parameters



The following table describes **Program Parameters** controls.

Table 19. Program Parameters Controls

Control	Description
Program Number	This is a 13-bit field. It specifies the PID in Transport Stream. The value is defined by the user and is selected from the available value list in accordance with Table 2-4 (ISO/IEC 13818-1).
Program PMT ID	This is a 16-bit field. It specifies the program to which the program_map_PID is applicable. If this is set to 0x0000, then the following PID reference will be the network PID. For all other cases, the value of this field is defined by the user. This field will not accept any single value more than once within one version of the program association table. The program number may be used as a designation for a broadcast channel, for example. (ISO/IEC 13818-1).

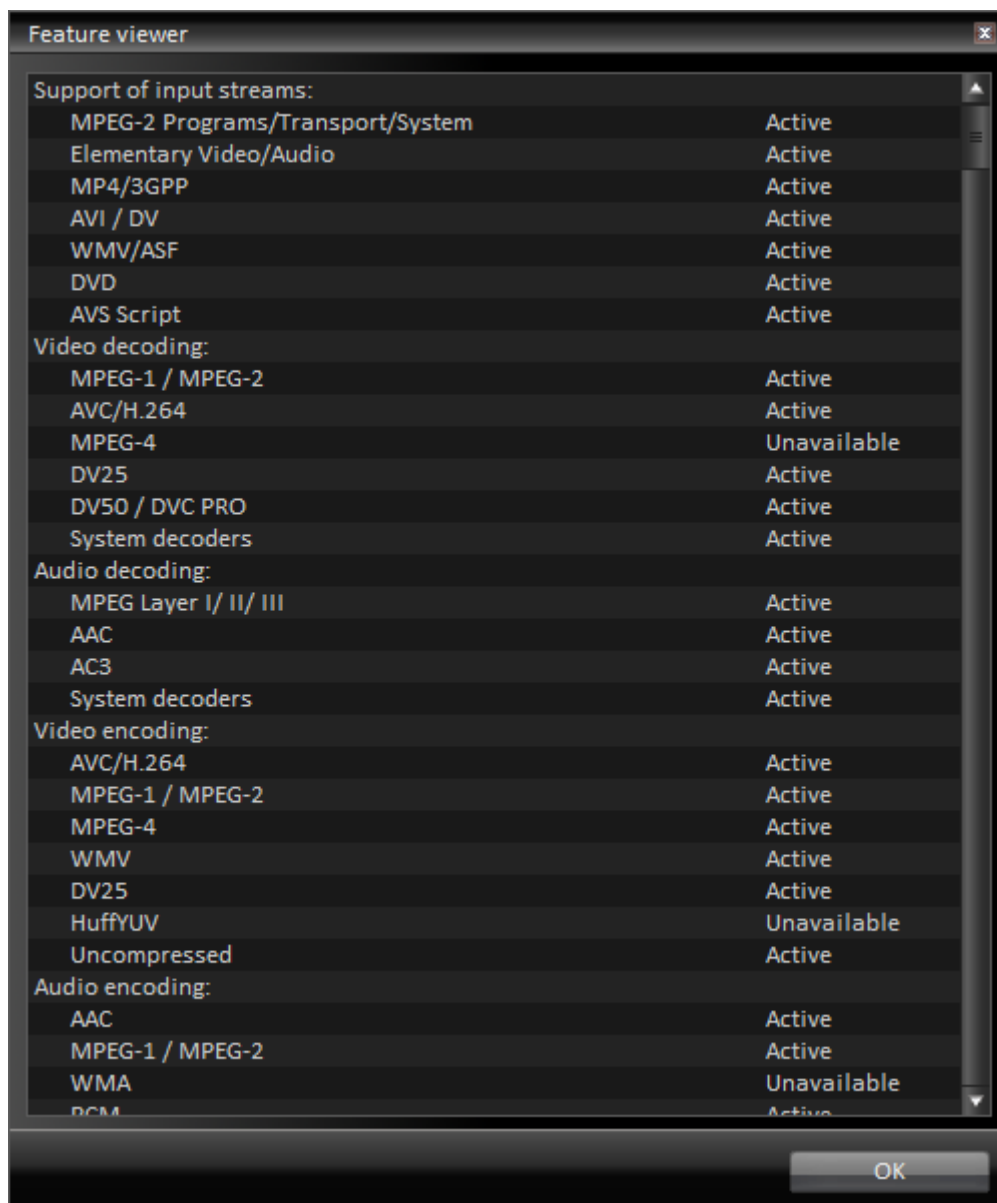
*Note: A language code can be specified in the **Language** column. The code standard values are described at http://en.wikipedia.org/wiki/List_of_ISO_639-2_codes*

7. Tools

7.1 Feature Viewer

All program features are realized with additional models that are enabled automatically. This tool allows the user to view the program features and the relevant module states. To open **Feature Viewer** press CTRL + F or select **Tools/ Feature Viewer** in the main menu.

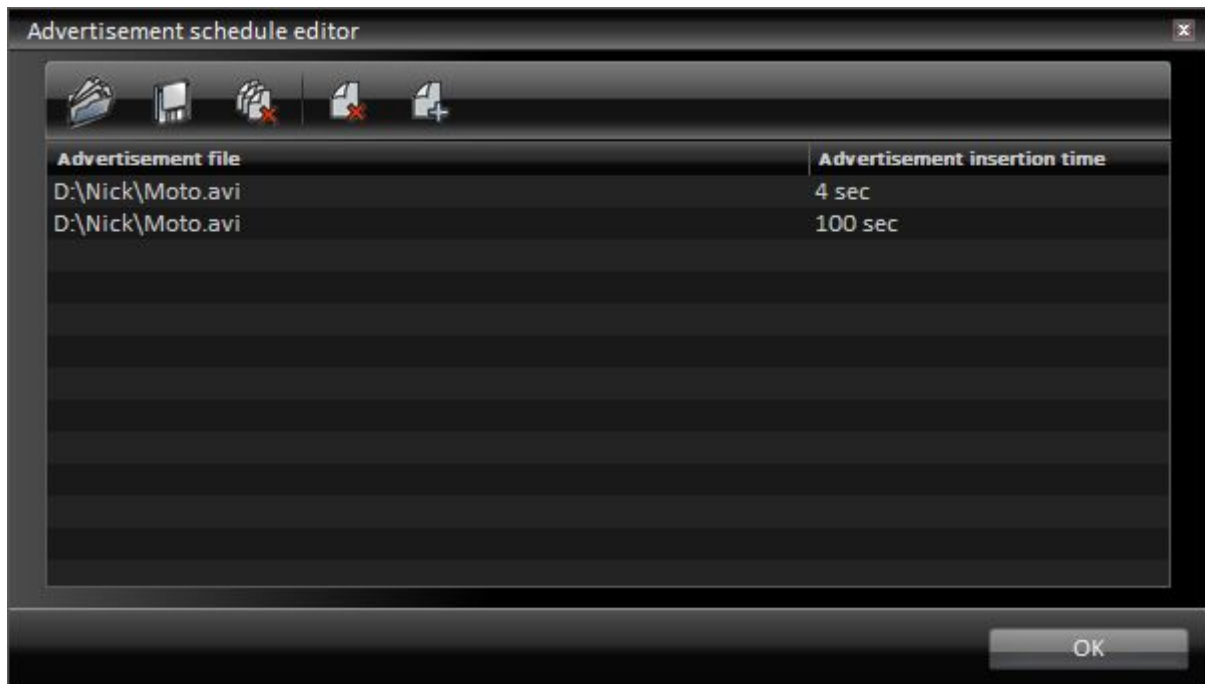
Figure 52. Tools - Feature Viewer



7.2 Advertisement Schedule Editor

Advertisement Schedule Editor allows the user to create a schedule file that contains information about the advertisement inserting order into the conversion task. The schedule can describe several advertisement trailers which must be shown at the specified time. To start **Schedule Editor** press CTRL+R key combination or click **Advertisement schedule editor** on the **Tools** menu. Set the required parameters in the **Advertisement Schedule Editor** window.

Figure 53. Tools – Advertisement Schedule Editor




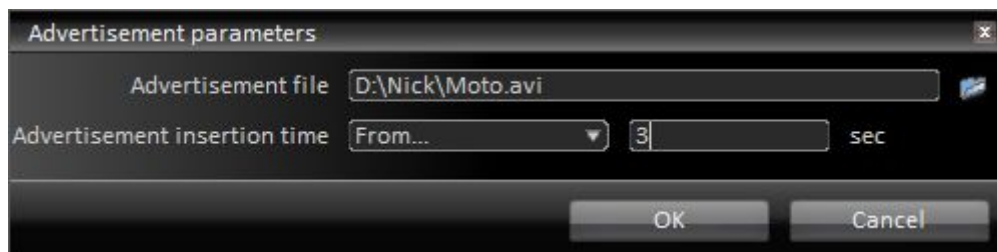
First, add files that must be further inserted as advertisement trailers. Click  and select an advertisement file. Specify the inserting position (in seconds) for each advertisement trailer.

Figure 54. Tools – Advertisement Parameters



Note: Advertisement files are supported only in AVI Uncompressed format. Audio must be in PCM format. The advertisement parameters (frame rate and resolution) must be the same as the converted video parameters. Otherwise, the advertisement trailer will be skipped.

7.3 Converter Studio Service Manager

Elecard Converter Studio allows the user to start the Watch Folder mode as Windows® service without GUI. For it during the program installation you should register the **Converter Studio Service** in the system, create special shortcuts for the service start and stop. The Converter Studio service can be used both in the local Watch Folder mode and in the network service control mode (cluster node creation).

To use the service in the local Watch Folder mode, start Converter Studio, select the **Converter**

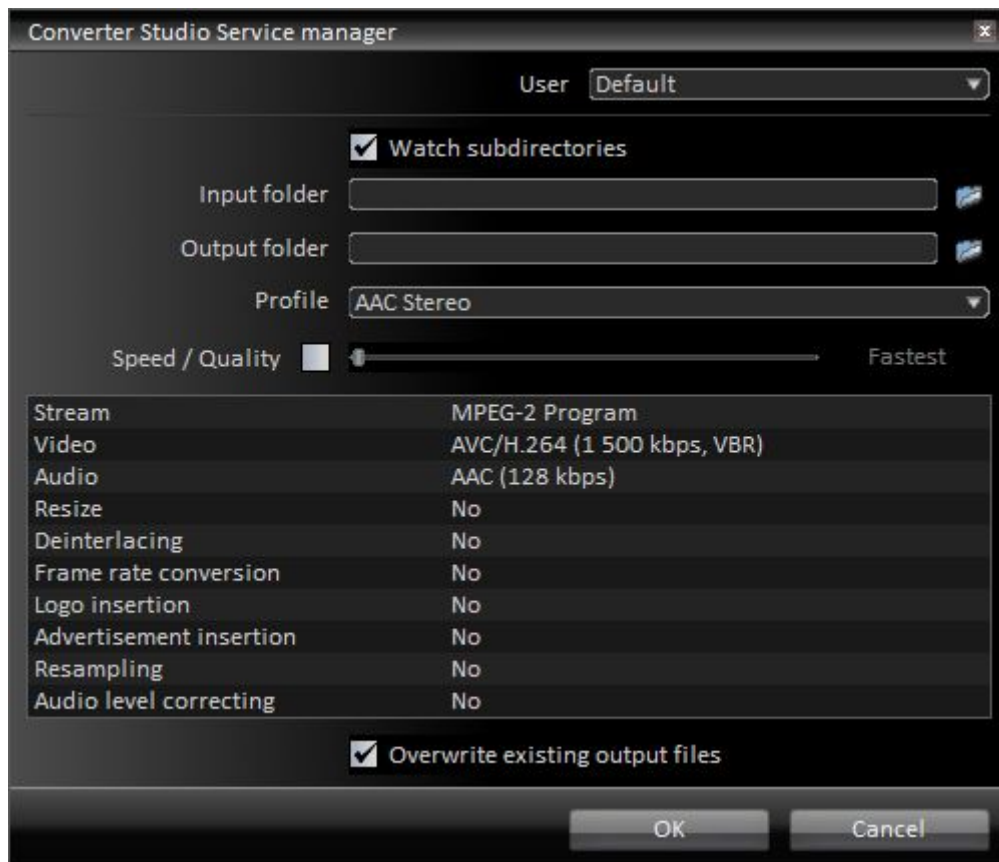
Studio Service... command from the **Tools** menu, set the required parameters in the open window and close the program.

To start the service, click *Start->All Programs->Elecard ->Elecard Converter Studio->Service->Start Service*.

To stop the service, click *Start->All Programs->Elecard ->Elecard Converter Studio->Stop Converter Studio Service*.

The service system parameters are available for adjustment via *Contrl Panel->Administrative Tools->Services*.

Figure 55. Converter Studio Service Manager



The following table describes **Converter Studio Service Manager** controls.

Table 20. Converter Studio Service Manager Controls

Control	Description
User	Specifies the user.
Watch Subdirectories	Enables subdirectories search in the input folder.
Input Folder	Specifies the input folder for monitoring.
Output Folder	Specifies the output folder for saving encoded files.
Profile	Allows the user to select the most suitable profile from the list. The Profile set contains the optimal parameters for encoding and provides creating of files that are compatible with different hardware devices.
Speed/Quality	Allows the adjustment of the encoding speed/quality ratio. The Fastest mode is adjusted to the maximum encoding speed. And vice versa, the

Control	Description
	Highest mode provides the maximum quality. The optimal speed/quality ratio is provided with the Optimal mode.
Overwrite Existing Output Files	Allows overwriting the existing files without confirmation when converting is over.

For the correct work of **Converter Studio Service** as the cluster node it is necessary to add the service to the Windows firewall exceptions. Start *Control Panel->Windows Firewall*, select the **Exceptions** tab, and click the **Add Program...** button. Add program '*C:\Program Files\Elecard\Elecard Converter Studio ProHD\csService.exe*'.

Note: The simultaneous work of the Converter Studio Service and the program is not allowed.

7.4 Batch List Filter

The Batch list filter allows selecting files for conversion according to the specified parameters. The filter is a very useful tool when the program works in the Watch Folder mode and there is no need to convert all files in the folder.


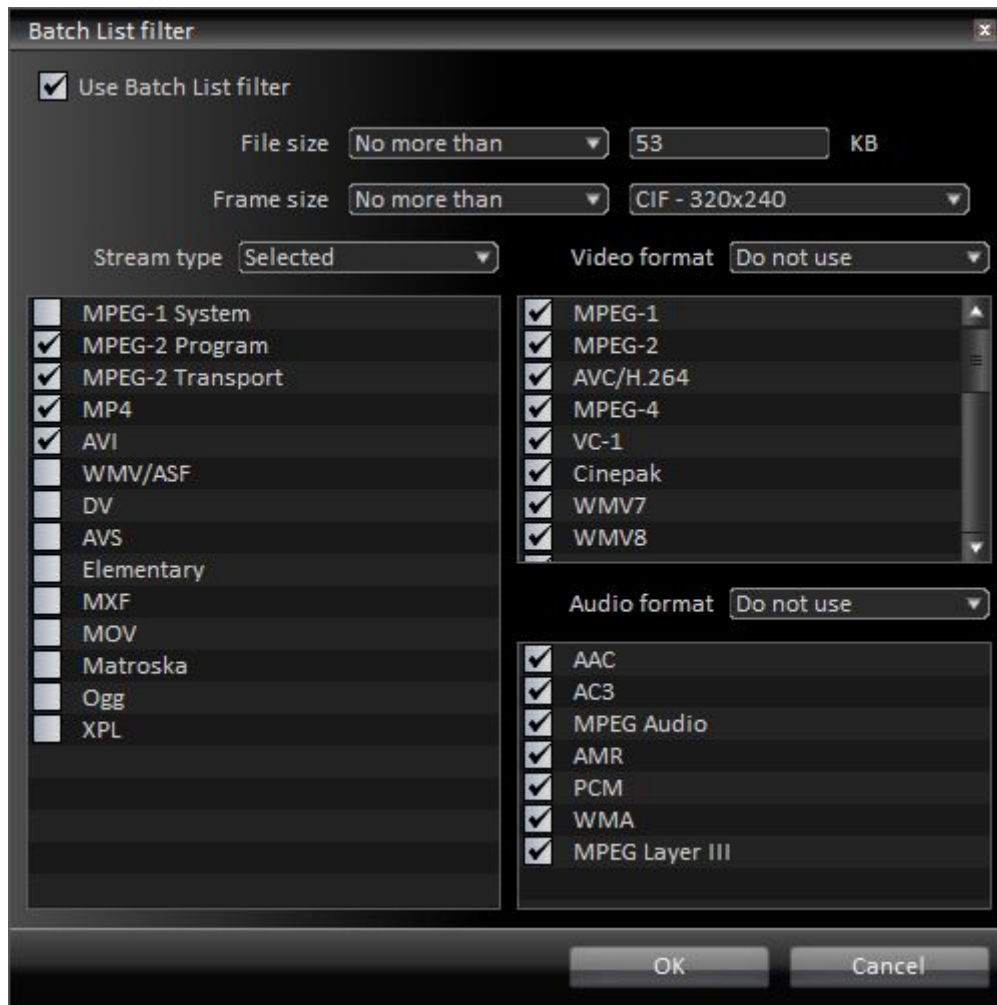
To set the Batch list filter click  on the **Batch List** panel. You can also press CTRL+ALT+F key combination or click **Batch List Filter** on the **Tools** menu. Set the required parameters in the **Batch List Filter** window.

Figure 56. Tools – Batch List Filter



The following table describes the **Batch List Filter** controls.

Table 21. Tools – Batch List Filter Controls

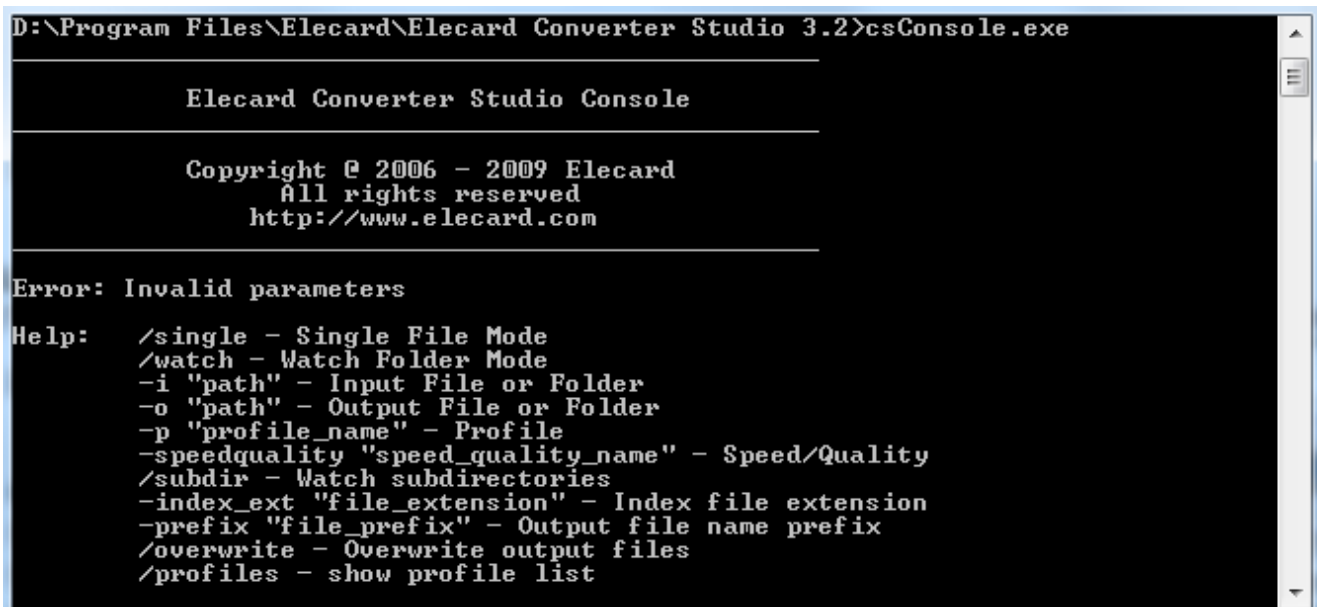
Control	Description
Use Batch List Filter	Enables/Disables the Batch list filter according to the specified parameters.
File Size	Sets the Batch list filter according to the specified file size, in KB.
Frame Size	Sets the Batch list filter according to the specified video frame size. The filter compares this size with one of standard sizes.
Stream Type	Sets the Batch list filter according to the stream type.
Video Format	Sets the Batch list filter according to the video format.
Audio Format	Sets the Batch list filter according to the audio format.

7.5 Converter Studio Console

Converter Studio can be started as console application that supports both the single file converting and the Watch Folder mode. More than one consoles can be started simultaneously.

The console binary file is located in the program installation folder. To start the console application, click Start->Run... and type 'CMD'. In the open window type 'C:\Program Files\Elecard\Elecard Converter Studio ProHD\csConsole.exe'.

Figure 57. Tools – Console Converter Studio



```
D:\Program Files\Elecard\Elecard Converter Studio 3.2>csConsole.exe

Elecard Converter Studio Console

Copyright © 2006 - 2009 Elecard
All rights reserved
http://www.elecard.com

Error: Invalid parameters

Help:  /single - Single File Mode
       /watch - Watch Folder Mode
       -i "path" - Input File or Folder
       -o "path" - Output File or Folder
       -p "profile_name" - Profile
       -speedquality "speed_quality_name" - Speed/Quality
       /subdir - Watch subdirectories
       -index_ext "file_extension" - Index file extension
       -prefix "file_prefix" - Output file name prefix
       /overwrite - Overwrite output files
       /profiles - show profile list
```

Command line allows the work mode selection and parameter settings. The command line format is following:

```
csConsole.exe /mode -i "file" -o "file" -p "profile" [/additional parameters]
```

where

/mode – Sets the application work mode:

```
/single – Single File mode
/watch – Watch Folder mode
```

-i «file» – Sets the path of input file in the Single File mode or the path of source folder in the Watch Folder mode.

-iftp «path» – Sets the path to input FTP server in the Watch Folder mode.

-o «file» – Sets the path of output file in the Single File mode or the path of destination folder in the Watch Folder mode.

-oftp «path» – Sets the path to output FTP server in the Watch Folder mode.

-p «profile» – Sets the name of profile.

-speedquality «name» – Specifies the speed mode of encoding with the selected profile. If the parameter is not specified, the encoding is performed with the maximal quality and consequently with the lowest speed .

/subdir — Enables scanning of subfolders in the source folder.

/overwrite — Allows overwriting of existing files.

-index_ext «name»— Specifies the default extension for index filename.

-prefix «name» — Specifies the output filename prefix (is added automatically).

-profile — Displays all available profiles.

/debug — Turns on the program debug logging.

/simple_log — Disables the statistical data logging during the encoding process.

To display the list of available profiles, start the console application with the */profiles* parameter.

Command line samples:

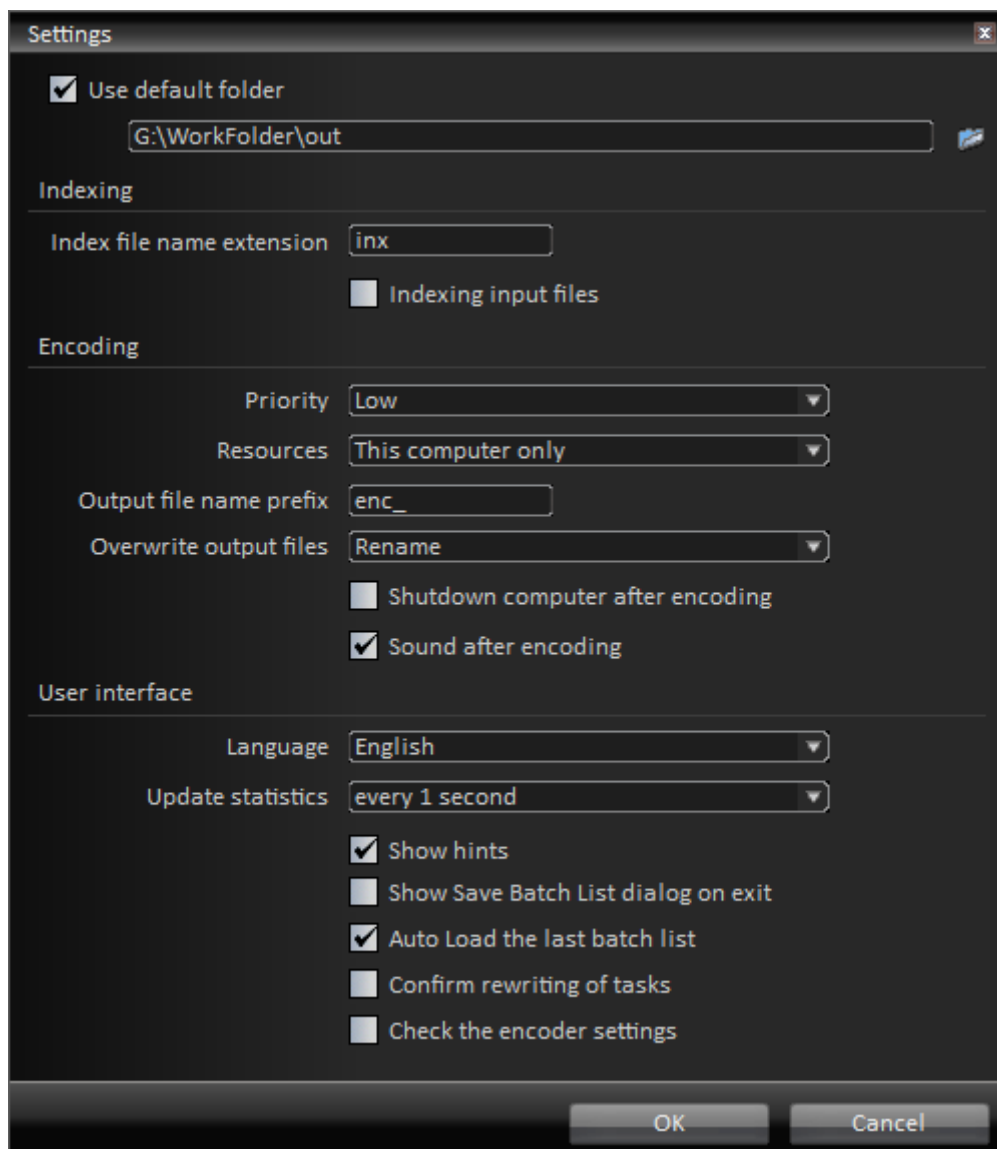
```
csConsole.exe /single -i "C:\input.mpg" -o "C:\output.mp4" -p "Sony  
PSP" -speedquality "Optimal" -prefix "enc_" /overwrite
```

```
csConsole.exe /watch -i "C:\media_in" -o "C:\media_out" -p "Sony PSP"  
-speedquality "Optimal" -prefix "enc_" /overwrite /subdir
```

8. Converter Studio Preferences

To change the Elecard Converter Studio preferences, select **Preferences** in the program main menu.

Figure 58. Converter Studio Preferences



The following table describes **Preferences** controls.

Table 22. Converter Studio Preferences Controls

Control	Description
Use default Folder	Allows the default output folder specification.
Index File Name Extension	Specifies the default index file name extension.
Indexing Input Files	Creates the index file before opening MPEG files. The indexing is used to determine the valid file duration and to improve positioning precision. It is preferable to enable this option by encoding the selected parts of the file and by the Chapter Points setting.
Priority	Sets the converting process priority.
Resources	Specifies the resources for task execution: <ul style="list-style-type: none"> • This computer — local task execution. Cluster is not used. • Cluster nodes — remote task execution. удаленное выполнение задач. The tasks from list are distributed among the available nodes. The main computer is used only for the nodes control. • This computer and cluster nodes — distributed computing. The tasks from list are distributed among the available computers (cluster nodes and the main computer).
Output File Name Prefix	Sets an additional prefix that is automatically added to the name of the output file.
Overwrite Existing Output Files	Allows the existing files overwriting without confirmation.
Shutdown computer after encoding	Allows the computer shutdown, when all of the tasks from task list are completed.
Sound after encoding	Enables beep notification of the task list completion.
Show Hints	Allows the hints displaying for all GUI elements.
Show Save Batch List Dialog on Exit	Enables opening the Save Batch List dialog to save the Batch list in case the Batch list was changed and not saved.
Auto Loading of Last Batch List	Enables the loading of the saved Batch list when Converter Studio is started. If this option is disabled, the initial Batch list is empty.
Confirm Rewriting of Tasks	If this option is enabled the program sends the warning message in case the task already exists in the Batch list.
Check the Encoder Settings	Allows checking encoder preferences and sending a message with detail description in case of errors.

9. Cluster Node Installation and Adjustment

When the program is installed, the **Converter Studio Service** is registered in the system and the service control shortcuts are created. For the correct work of **Converter Studio Service** as the cluster node it is necessary to add the service to the Windows firewall exceptions. Start *Control Panel->Windows Firewall*, select the **Exceptions** tab, and click the **Add Program...** button. Add program '*C:\Program Files\Elecard\Elecard Converter Studio ProHD\csService.exe*'.

Adjust the service system parameters via *Control Panel->Administrative Tools->Services*.

To start the service, click *Start->All Programs->Elecard ->Elecard Converter Studio->Service->Start Service*.

To stop the service, click *Start->All Programs->Elecard ->Elecard Converter Studio->Stop Converter Studio Service*.

10. Hot Keys

Table 23. Hot Keys

Key Combination	Command
CTRL+O	Open Media File..
CTRL+M	Open Media Files...
CTRL+D	Open DVD...
CTRL+ALT+S	Save Batch List
CTRL+SHIFT+S	Save Batch List as...
CTRL+ALT+O	Load Batch List
CTRL+ALT+X	Clear Batch List
CTRL+ALT+C	Delete Completed Task(s)
CTRL+W	Watch Folder Mode
CTRL+S	Converter Studio Service
CTRL+R	Advertisement Schedule Editor
CTRL+ALT+F	Batch List filter
CTRL+F	Features Viewer
CTRL+I	Index the media file of the current task
CTRL+P	Preferences...
CTRL+A	Select all tasks in the Batch List
F1	Converter Studio Help
F5	Display Preview panel
F6	Display Batch List panel
F7	Display Profiles panel
F8	Display Messages panel
F9	Display Cluster panel
F11	Display Statistics panel
[Set the start position for the transcoding process
]	Set the stop position for the transcoding process
*	Add Chapter Point