



Elecard MPEG-2 PlugIn for WMP v.5.3

User Guide

Notices

Elecard MPEG-2 PlugIn for WMP v.5.3 User Guide

First edition: March 2006

Date modified: March 21, 2016.

For information, contact Elecard.

Tel: +7-3822-701-455

More information can be found at: <http://www.elecard.com>.

For Technical Support, please contact the Elecard Technical Support Team:

tsup@elecard.com

Elecard provides this publication “as is” without warranty of any kind, either expressed or implied.

This publication may contain technical inaccuracies or typographical errors. While every precaution has been taken in the preparation of this document, the publisher and author assume no responsibility for errors or omissions. Nor is any liability assumed for damages resulting from the use of the information contained herein. Changes are periodically made to the information herein; these changes will be incorporated in new editions of the publication. Elecard may make improvements and/ or changes in the product(s) and/or the program(s) described in this publication at any time.

Other company, product, trademarks, and service names are trademarks or service marks of other companies or corporations.

Copyright ©2006-2016 Elecard. All rights reserved.

CONTENTS

1. INTRODUCTION.....	4
1.1 PREFACE.....	4
1.2 SYSTEM REQUIREMENTS.....	5
2. OPEN URL DIALOG USE.....	5
2.1 RECEIVING DATA VIA RTSP PROTOCOL.....	5
2.2 RECEIVING STREAMS OVER THE NETWORK VIA UDP/RTP.....	6
2.2.1 For multicast:.....	6
2.2.2 For unicast:.....	6

1. Introduction

1.1 Preface

Elecard MPEG-2 PlugIn for WMP is the package of Elecard components for media data receiving from network (UDP, RTP over UDP, TCP, RTP over TCP) using the RTSP protocol or from files, and decoding MPEG-2 video and MPEG-1/2 audio streams. The package can be used with all generations of WMP (Windows Media Player) or any other application based on the DirectShow architecture.

The PlugIn supports the following media data formats:

Video

- MPEG-2 video (ISO/IEC 13818-7)
- MPEG-1 (ISO/IEC 11172-2)

Audio

- MPEG-1 (ISO/IEC 11172-3) Layer I, II, and III
- MPEG-2 (ISO/IEC 13818-3)
- MPEG-2 (ISO/IEC 13818-3) extensions to lower sampling frequencies, including the unofficial MPEG-2.5 format
- LPCM (up to 7.1 / 24 bits / 96 kHz)

MPEG-2 PlugIn for WMP includes the following components:

Table 1. Elecard MPEG-2 PlugIn for WMP Components

Component	File Name	Description
Elecard MPEG-2 Video Decoder	em2vd.ax	DirectShow filter for real-time video decoding. Provides high resolution, full quality decoding, optimized for the most efficient CPU usage.
Elecard MPEG Audio Decoder	emad.ax	DirectShow filter for software-only decoding MPEG-1, MPEG-2, MPEG-2.5 and LPCM audio streams.
Elecard MPEG Demultiplexer	empgdmx.ax	DirectShow filter for splitting of MPEG-1 System Streams (ISO/IEC 11172-1), MPEG-2 Program and Transport Streams (ISO/IEC 13818-1) into video and audio streams.
Elecard MPEG Push Demultiplexer	empgpdmx.ax	DirectShow filter for splitting of MPEG-1 System Streams (ISO/IEC 11172-1), MPEG-2 Program and Transport Streams (ISO/IEC 13818-1) into video and audio streams in a push mode.

Component	File Name	Description
Elecard NWSource-Plus	enwsplus.ax	DirectShow filter for receiving media data from the network. It receives the RTP and UDP packets and feeds the filter graph with stream data contained in these packets.
Elecard RTSP Net Source	ertspnws.ax	DirectShow filter that sets the connection with RTSP server sends request for starting, stopping, pausing the media broadcasting and positioning in the stream, receives media data from RTSP server.

1.2 System requirements

- SSE-enhanced CPU (Intel® Pentium III, Celeron, AMD® Athlon, Opteron etc.)
- 128 MB RAM
- Any VGA card
- Windows® 2000/XP/2003 Server/Vista/7

2. Open URL Dialog Use

To receive media data broadcasted from a media server click **Open URL** on the **File** menu of Windows Media Player.

2.1 Receiving Data via RTSP Protocol

To receive data via RTSP protocol the media file address should be typed in the following way:

```
elecard_rtsp://server_address:port[/data_path]
```

where:

server_address – server IP or DNS name.

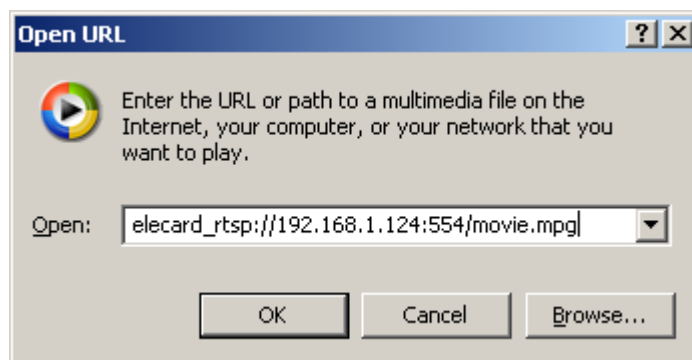
port – server port number for RTPS commands (unsigned integer value from 1 to 65535; 554 - default value).

data_path – media file for playback.

For example:

```
elecard_rtsp://192.168.1.124:554/movie.mpg
```

Figure 1. Windows Media Player - Open URL Dialog



Note: You can use ElecCARD VOD Server for broadcasting with RTSP controlling (<http://www.elecCARD.com/products/iptv-solutions/v-cinema/vod-videoserver.php>).

2.2 Receiving Streams over the Network via UDP/RTP

To receive streams over the network via UDP/RTP the URL address should be typed as described below.

2.2.1 For multicast:

```
elecCARD://mcast_group:port[[:s=server_address][:i=interface]
[:t=payload_type]]/type
```

where:

mcast_group – multicast IP address (e.g. 234.5.5.5).

port – unsigned integer value from 1 to 65535.

server_address – data source server IP or DNS name.

interface – local interface IP.

payload_type – stream payload type (m2p, m2t, m1s).

type – type of stream transport (udp or rtp).

For example:

```
elecCARD://234.5.5.5:10201:s=192.168.57.14:i=192.168.57.23:t=m2p/udp
```

or

```
elecCARD://234.5.5.5:10201/udp
```

2.2.2 For unicast:

```
elecCARD://server_address:port[[:i=interface][:t=payload_type]]/type
```

where:

server_address – data source server IP or DNS name

port – unsigned integer value from 1 to 65535

interface – local interface IP

payload_type – stream payload type (m2p, m2t, m1s)

type – type of stream transport (udp or rtp)

For example:

```
elecard://192.168.57.14:10201:i=192.168.57.23:t=m2p/udp
```

or

```
elecard://192.168.57.14:10201/udp
```

Note: You can use Elecard NWServer for unicast/multicast streaming without RTSP controlling (<http://www.elecard.com/products/products-pc/sdk/decoder-sdk/>).
